



ONTAP® 9

# NetApp® Encryption Power Guide

June 2021 | 215-11633\_2021-06\_en-us  
doccomments@netapp.com

Updated for ONTAP 9.9.1

 **NetApp®**

# Contents

**Deciding whether to use the NetApp Encryption Power Guide..... 4**

**Configuring NetApp Volume Encryption..... 5**

- NetApp Volume Encryption workflow..... 8
- Configuring NVE..... 8
  - Determining whether your cluster version supports NVE..... 8
  - Installing the license..... 9
  - Configuring external key management..... 9
  - Enabling onboard key management in ONTAP 9.6 and later (NVE)..... 13
  - Enabling onboard key management in ONTAP 9.5 and earlier (NVE)..... 15
  - Enabling onboard key management in newly added nodes..... 17
- Encrypting volume data with NVE..... 17
  - Enabling aggregate-level encryption with NVE license ..... 17
  - Enabling encryption on a new volume..... 18
  - Enabling encryption on an existing volume with the volume encryption conversion start command..... 20
  - Enabling encryption on an existing volume with the volume move start command..... 21
  - Enabling node root volume encryption..... 23

**Configuring NetApp hardware-based encryption..... 24**

- Hardware-based encryption workflow..... 25
- Configuring external key management..... 25
  - Collecting network information in ONTAP 9.2 and earlier..... 26
  - Installing SSL certificates on the cluster..... 27
  - Enabling external key management in ONTAP 9.6 and later (HW-based)..... 27
  - Enabling external key management in ONTAP 9.5 and earlier..... 28
  - Creating authentication keys in ONTAP 9.6 and later..... 29
  - Creating authentication keys in ONTAP 9.5 and earlier..... 30
  - Assigning a data authentication key to a FIPS drive or SED (external key management)..... 31
- Configuring onboard key management..... 32
  - Enabling onboard key management in ONTAP 9.6 and later..... 32
  - Enabling onboard key management in ONTAP 9.5 and earlier..... 34
  - Assigning a data authentication key to a FIPS drive or SED (onboard key management)..... 36
- Assigning a FIPS 140-2 authentication key to a FIPS drive..... 36
- Enabling cluster-wide FIPS-compliant mode for KMIP server connections..... 37

**Managing NetApp encryption..... 39**

- Unencrypting volume data..... 39
- Moving an encrypted volume..... 39
- Delegating authority to run the volume move command..... 40
- Changing the encryption key for a volume with the volume encryption rekey start command..... 41
- Changing the encryption key for a volume with the volume move start command..... 41
- Rotating authentication keys for NetApp Storage Encryption..... 42
- Deleting an encrypted volume..... 43
- Securely purging data on an encrypted volume..... 43

- Securely purging data on an encrypted volume without a SnapMirror relationship..... 44
- Securely purging data on an encrypted volume with an Asynchronous SnapMirror relationship..... 45
- Scrubbing data on an encrypted volume with a Synchronous SnapMirror relationship..... 46
- Changing the onboard key management passphrase..... 47
- Backing up onboard key management information manually..... 48
- Restoring onboard key management encryption keys..... 49
- Restoring external key management encryption keys..... 50
- Replacing SSL certificates..... 51
- Replacing a FIPS drive or SED..... 52
- Making data on a FIPS drive or SED inaccessible..... 53
  - Sanitizing a FIPS drive or SED..... 53
  - Destroying a FIPS drive or SED..... 54
  - Emergency shredding of data on a FIPS drive or SED..... 55
- Returning a FIPS drive or SED to service when authentication keys are lost..... 57
- Returning a FIPS drive or SED to unprotected mode..... 58
- Deleting an external key manager connection..... 59
- Modifying external key management server properties..... 59
- Transitioning to external key management from onboard key management..... 60
- Transitioning to onboard key management from external key management..... 61
- What happens when key management servers are not reachable during the boot process..... 61
- Disabling encryption by default with ONTAP 9.7 and later..... 62

**Where to find additional information..... 64**

**Copyright, trademark, and machine translation..... 65**

- Copyright..... 65
- Trademark..... 65
- Machine translation..... 65

## Deciding whether to use the NetApp Encryption Power Guide

---

NetApp offers both software- and hardware-based encryption technologies for ensuring that data at rest cannot be read if the storage medium is repurposed, returned, misplaced, or stolen.

- Software-based encryption supports data encryption one volume at a time.
- Hardware-based encryption supports full-disk encryption (FDE) of data as it is written.

You should use this guide if you want to work with encryption in the following way:

- You want to use best practices, not explore every available option.
- You do not want to read a lot of conceptual background.
- You want to use the ONTAP command-line interface (CLI), not ONTAP System Manager or an automated scripting tool.

As of ONTAP 9.7, System Manager supports onboard key manager encryption. For more information, see the System Manager documentation:

- [https://docs.netapp.com/us-en/ontap/task\\_security\\_encrypt\\_stored\\_data\\_sw.html](https://docs.netapp.com/us-en/ontap/task_security_encrypt_stored_data_sw.html)
- [https://docs.netapp.com/us-en/ontap/task\\_security\\_encrypt\\_stored\\_data\\_hw.html](https://docs.netapp.com/us-en/ontap/task_security_encrypt_stored_data_hw.html)

If this guide is not suitable for your situation, you should see the following documentation instead:

- [ONTAP 9 commands](#)
- [NetApp Documentation: OnCommand Workflow Automation \(current releases\)](#)

# Configuring NetApp Volume Encryption

---

NetApp Volume Encryption (NVE) is a software-based technology for encrypting data at rest one volume at a time. An encryption key accessible only to the storage system ensures that volume data cannot be read if the underlying device is repurposed, returned, misplaced, or stolen.

## Understanding NVE

Both data, including Snapshot copies, and metadata are encrypted. Access to the data is given by a unique XTS-AES-256 key, one per volume. An external key management server or Onboard Key Manager serves keys to nodes:

- The external key management server is a third-party system in your storage environment that serves keys to nodes using the Key Management Interoperability Protocol (KMIP). It is a best practice to configure external key management servers on a different storage system from your data.
- The Onboard Key Manager is a built-in tool that serves keys to nodes from the same storage system as your data.

Starting with ONTAP 9.7, aggregate and volume encryption is enabled by default if you have a volume encryption (VE) license and use an onboard or external key manager. Whenever an external or onboard key manager is configured there is a change in how data at rest encryption is configured for brand new aggregates and brand new volumes. Brand new aggregates will have NetApp Aggregate Encryption (NAE) enabled by default. Brand new volumes that are not part of an NAE aggregate will have NetApp Volume Encryption (NVE) enabled by default. If a data storage virtual machine (SVM) is configured with its own key-manager using multi-tenant key management in an aggregate with NAE, then the volume created for that SVM is automatically configured with NVE.

You can enable encryption on a new or existing volume. NVE supports the full range of storage efficiency features, including deduplication and compression.

**Note:** If you are using SnapLock, you can enable encryption only on new, empty SnapLock volumes. You cannot enable encryption on an existing SnapLock volume.

You can use NVE on any type of aggregate (HDD, SSD, hybrid, array LUN), with any RAID type, and in any supported ONTAP implementation, including ONTAP Select. You can also use NVE with hardware-based encryption to “double encrypt” data on self-encrypting drives.

**Note:** AFF A220, AFF A800, FAS2720, FAS2750, and later systems store core dumps on their boot device. When NVE is enabled on these systems, the core dump is also encrypted.

## Aggregate-level encryption

Ordinarily, every encrypted volume is assigned a unique key. When the volume is deleted, the key is deleted with it.

Starting with ONTAP 9.6, you can use *NetApp Aggregate Encryption (NAE)* to assign keys to the containing aggregate for the volumes to be encrypted. When an encrypted volume is deleted, the keys for the aggregate are preserved. The keys are deleted only after the last encrypted volume in the aggregate is deleted.

You must use aggregate-level encryption if you plan to perform inline or background aggregate-level deduplication. Aggregate-level deduplication is otherwise not supported by NVE.

Starting with ONTAP 9.7, aggregate and volume encryption is enabled by default if you have a volume encryption (VE) license and use an onboard or external key manager.

NVE and NAE volumes can coexist on the same aggregate. Volumes encrypted under aggregate-level encryption are NAE volumes by default. You can override the default when you encrypt the volume.

You can use the `volume move` command to convert an NVE volume to an NAE volume, and vice versa. You can replicate an NAE volume to an NVE volume.

### When to use external key management servers

Although it is less expensive and typically more convenient to use the onboard key manager, you should set up KMIP servers if any of the following are true:

- Your encryption key management solution must comply with Federal Information Processing Standards (FIPS) 140-2 or the OASIS KMIP standard.
- You need a multi-cluster solution, with centralized management of encryption keys.
- Your business requires the added security of storing authentication keys on a system or in a location different from the data.

### Scope of external key management

The scope of external key management determines whether key management servers secure all the SVMs in the cluster or selected SVMs only:

- You can use a *cluster scope* to configure external key management for all the SVMs in the cluster. The cluster administrator has access to every key stored on the servers.
- Starting with ONTAP 9.6, you can use an *SVM scope* to configure external key management for a named SVM in the cluster. That's best for multitenant environments in which each tenant uses a different SVM (or set of SVMs) to serve data. Only the SVM administrator for a given tenant has access to the keys for that tenant.

You can use both scopes in the same cluster. If key management servers have been configured for an SVM, ONTAP uses only those servers to secure keys. Otherwise, ONTAP secures keys with the key management servers configured for the cluster.

### Support details

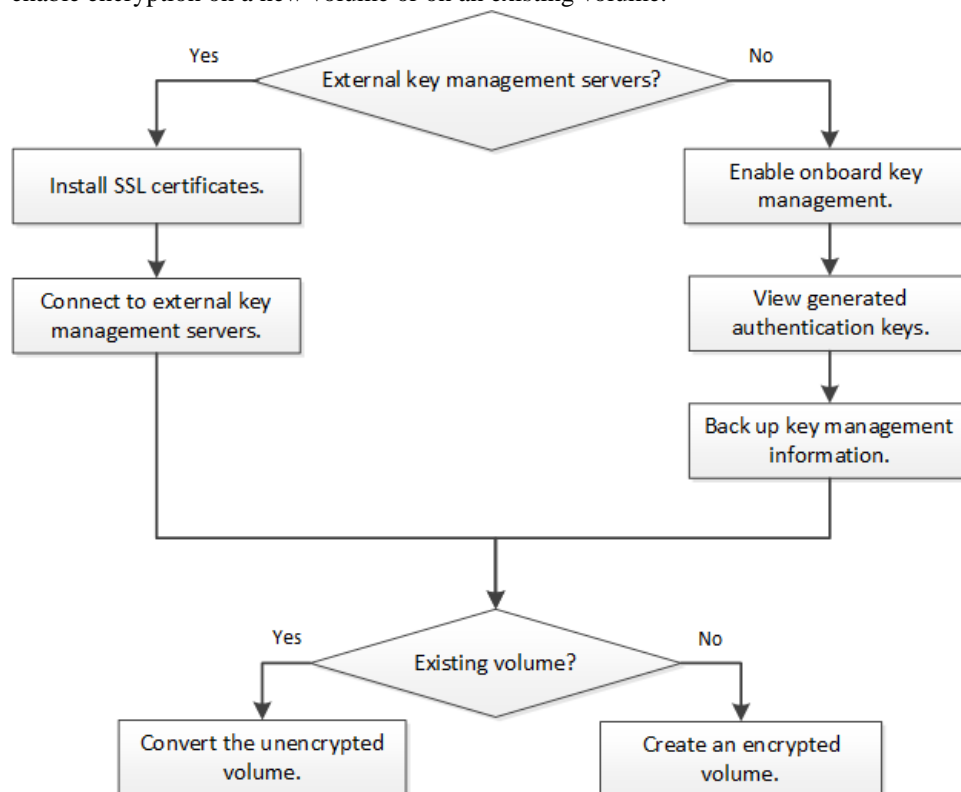
The following table shows NVE support details:

Resource or feature	Support details
Platforms	AES-NI offload capability required. See the Hardware Universe (HWU) to verify that NVE and NAE are supported for your platform.
Encryption	<p>Starting ONTAP 9.7, newly created aggregates and volumes are encrypted by default when you add a volume encryption (VE) and have an onboard or external key manager configured.</p> <p>If you need to create an unencrypted aggregate, use the following command:</p> <pre><b>storage aggregate create -encrypt-with-aggr-key false</b></pre> <p>If you need to create a plain text volume, use the following command:</p> <pre><b>volume create -encrypt false</b></pre> <p>Encryption is not enabled by default when:</p> <ul style="list-style-type: none"> <li>• VE is not configured</li> <li>• Key manager is not configured</li> <li>• Platform or software does not support encryption</li> <li>• Hardware encryption is enabled</li> </ul>

Resource or feature	Support details
ONTAP	All ONTAP implementations. Support for ONTAP Cloud is available in ONTAP 9.5 and later.
Devices	HDD, SSD, hybrid, array LUN.
RAID	RAID0, RAID4, RAID-DP, RAID-TEC.
Volumes	Data volumes, existing root volumes, and MetroCluster metadata volumes. You cannot encrypt data on an SVM root volume.
Aggregate-level encryption	Starting with ONTAP 9.6, NVE supports aggregate-level encryption (NAE): <ul style="list-style-type: none"> <li>• You must use aggregate-level encryption if you plan to perform inline or background aggregate-level deduplication.</li> <li>• You cannot rekey an aggregate-level encryption volume.</li> <li>• Secure-purge is not supported on aggregate-level encryption volumes.</li> <li>• In addition to data volumes, NAE supports encryption of SVM root volumes and the MetroCluster metadata volume. NAE does not support encryption of the root volume.</li> </ul>
SVM scope	Starting with ONTAP 9.6, NVE supports SVM scope for external key management only, not for Onboard Key Manager. MetroCluster is not supported.
Storage efficiency	Deduplication, compression, compaction, FlexClone. Clones use the same key as the parent, even after splitting the clone from the parent. You are warned to rekey the split clone.
Replication	<ul style="list-style-type: none"> <li>• For volume replication, the destination volume must have been enabled for encryption. Encryption can be configured for the source and unconfigured for the destination, and vice versa.</li> <li>• For SVM replication, the destination volume is automatically encrypted, unless the destination does not contain a node that supports volume encryption, in which case replication succeeds, but the destination volume is not encrypted.</li> <li>• For MetroCluster configurations, each cluster pulls external key management keys from its configured key servers. OKM keys are replicated to the partner site by the configuration replication service.</li> </ul>
Compliance	Starting with ONTAP 9.2, SnapLock is supported in both Compliance and Enterprise modes, for new volumes only. You cannot enable encryption on an existing SnapLock volume.
FlexGroups	Starting with ONTAP 9.2, FlexGroups are supported. Destination aggregates must be of the same type as source aggregates, either volume-level or aggregate-level. Starting with ONTAP 9.5, in-place rekey of FlexGroup volumes is supported.
7-Mode transition	Starting with 7-Mode Transition Tool 3.3, you can use the 7-Mode Transition Tool CLI to perform copy-based transition to NVE-enabled destination volumes on the clustered system.

## NetApp Volume Encryption workflow

You must configure key management services before you can enable volume encryption. You can enable encryption on a new volume or on an existing volume.



## Configuring NVE

You must install the NVE license and configure key management services before you can encrypt data with NVE. Before installing the license, you should determine whether your ONTAP version supports NVE.

### Determining whether your cluster version supports NVE

You should determine whether your cluster version supports NVE before you install the license. You can use the `version` command to determine the cluster version.

#### About this task

The cluster version is the lowest version of ONTAP running on any node in the cluster.

#### Step

Determine whether your cluster version supports NVE:

```
version -v
```

NVE is not supported if the command output displays the text "1Ono-DARE" (for "no Data At Rest Encryption"), or if you are using a platform that is not listed in [Support details](#) on page 6.

The following command determines whether NVE is supported on `cluster1`.

```
cluster1::> version -v  
NetApp Release 9.1.0: Tue May 10 19:30:23 UTC 2016 <1Ono-DARE>
```



The text "1Ono-DARE" in the command output indicates that NVE is not supported on your cluster version.

## Installing the license

An NVE license entitles you to use the feature on all nodes in the cluster. You must install the license before you can encrypt data with NVE.

### Before you begin

You must be a cluster administrator to perform this task.

### About this task

You should have received the NVE license key from your sales representative.

### Steps

1. Install the NVE license for a node:

```
system license add -license-code license_key
```

The following command installs the license with the key

```
AAAAAAAAAAAAAAAAAAAAAAAAAAAAAA
```

```
cluster1::> system license add -license-code AAAAAAAAAAAAAAAAAAAAAAAAAAAAAA
```

2. Verify that the license is installed by displaying all the licenses on the cluster:

```
system license show
```

For complete command syntax, see the man page for the command.

The following command displays all the licenses on **cluster1**:

```
cluster1::> system license show
```

The NVE license package name is "VE".

## Configuring external key management

You can use one or more external key management servers to secure the keys that the cluster uses to access encrypted data. An external key management server is a third-party system in your storage environment that serves keys to nodes using the Key Management Interoperability Protocol (KMIP).

**Note:** For ONTAP 9.1 and earlier versions, node management LIFs must be assigned to ports that are configured with the node management role before you can use the external key manager.

**Note:** NetApp Volume Encryption (NVE) supports Onboard Key Manager in ONTAP 9.1 and later. In ONTAP 9.3 and later, NVE supports external key management (KMIP) and Onboard Key Manager.

## Installing SSL certificates on the cluster

The cluster and KMIP server use KMIP SSL certificates to verify each other's identity and establish an SSL connection. Before configuring the SSL connection with the KMIP server, you must install the KMIP client SSL certificates for the cluster, and the SSL public certificate for the root certificate authority (CA) of the KMIP server.

### Before you begin

- The time must be synchronized on the server creating the certificates, the KMIP server, and the cluster.
- You must have obtained the public SSL KMIP client certificate for the cluster.

- You must have obtained the private key associated with the SSL KMIP client certificate for the cluster.  
The SSL KMIP client certificate must not be password-protected.
- You must have obtained the SSL public certificate for the root certificate authority (CA) of the KMIP server.

**Note:** You can install the client and server certificates on the KMIP server before or after installing the certificates on the cluster.

### About this task

In an HA pair, both nodes must use the same public and private KMIP SSL certificates. If you connect multiple HA pairs to the same KMIP server, all nodes in the HA pairs must use the same public and private KMIP SSL certificates.

### Steps

1. Install the SSL KMIP client certificates for the cluster:

```
security certificate install -vserver admin_svm_name -type client
```

You are prompted to enter the SSL KMIP public and private certificates.

```
cluster1::> security certificate install -vserver cluster1 -type client
```

2. Install the SSL public certificate for the root certificate authority (CA) of the KMIP server:

```
security certificate install -vserver admin_svm_name -type server-ca
```

```
cluster1::> security certificate install -vserver cluster1 -type server-ca
```

## Enabling external key management in ONTAP 9.6 and later (NVE)

You can use one or more KMIP servers to secure the keys the cluster uses to access encrypted data. Starting with ONTAP 9.6, you can use one or more KMIP servers to secure the keys a given SVM uses to access encrypted data.

### Before you begin

- The KMIP SSL client and server certificates must have been installed.
- You must be a cluster or SVM administrator to perform this task.
- You must configure the MetroCluster environment before you enable encryption.

### About this task

You can connect up to four KMIP servers to a cluster or SVM. A minimum of two servers is recommended for redundancy and disaster recovery.

The scope of external key management determines whether key management servers secure all the SVMs in the cluster or selected SVMs only:

- You can use a *cluster scope* to configure external key management for all the SVMs in the cluster. The cluster administrator has access to every key stored on the servers.
- Starting with ONTAP 9.6, you can use an *SVM scope* to configure external key management for a named SVM in the cluster. That's best for multitenant environments in which each tenant uses a different SVM (or set of SVMs) to serve data. Only the SVM administrator for a given tenant has access to the keys for that tenant.
- For multitenant environments, install a license for *MT\_EK\_MGMT* by using the following command:

```
system license add -license-code <MT_EK_MGMT license code>
```

For complete command syntax, see the man page for the command.

You can use both scopes in the same cluster. If key management servers have been configured for an SVM, ONTAP uses only those servers to secure keys. Otherwise, ONTAP secures keys with the key management servers configured for the cluster.

You can configure onboard key management at the cluster scope and external key management at the SVM scope. You can use the `security key-manager key migrate` command to migrate keys from onboard key management at the cluster scope to external key managers at the SVM scope.

## Steps

1. Configure key manager connectivity for the cluster:

```
security key-manager external enable -vserver admin_SVM -key-servers host_name |  
IP_address:port,... -client-cert client_certificate -server-ca-cert  
server_CA_certificates
```

**Note:** The `security key-manager external enable` command replaces the `security key-manager setup` command. If you run the command at the cluster login prompt, `admin_SVM` defaults to the admin SVM of the current cluster.

You must be the cluster administrator to configure cluster scope. You can run the `security key-manager external modify` command to change the external key management configuration.

The following command enables external key management for `cluster1` with three external key servers. The first key server is specified using its hostname and port, the second is specified using an IP address and the default port, and the third is specified using an IPv6 address and port:

```
cluster1::> security key-manager external enable -vserver cluster1 -key-servers  
ks1.local:15696,10.0.0.10,[fd20:8b1e:b255:814e:32bd:f35c:832c:5a09]:1234 -client-cert  
AdminVserverClientCert -server-ca-certs AdminVserverServerCaCert
```

2. Configure key manager connectivity for an SVM:

```
security key-manager external enable -vserver SVM -key-servers host_name/  
IP_address:port,... -client-cert client_certificate -server-ca-cert  
server_CA_certificates
```

**Note:** If you run the command at the SVM login prompt, `SVM` defaults to the current SVM.

You must be a cluster or SVM administrator to configure SVM scope. You can run the `security key-manager external modify` command to change the external key management configuration.

The following command enables external key management for `svm1` with a single key server listening on the default port 5696:

```
svm11::> security key-manager external enable -vserver svm1 -key-servers  
keyserver.svm1.com -client-cert SVM1ClientCert -server-ca-certs SVM1ServerCaCert
```

3. Repeat the last step for any additional SVMs.

**Note:** You can also use the `security key-manager external add servers` command to configure additional SVMs. The `security key-manager external add servers` command replaces the `security key-manager add` command. For complete command syntax, see the man page.

4. Verify that all configured KMIP servers are connected:

```
security key-manager external show-status -node node_name
```

**Note:** The `security key-manager external show-status` command replaces the `security key-manager show -status` command. For complete command syntax, see the man page.

```
cluster1::> security key-manager external show-status
```

Node	Vserver	Key Server	Status
-----			
node1			
	svml	keyserver.svml.com:5696	available
	cluster1	10.0.0.10:5696	available
		fd20:8ble:b255:814e:32bd:f35c:832c:5a09:1234	available
		ks1.local:15696	available
node2			
	svml	keyserver.svml.com:5696	available
	cluster1	10.0.0.10:5696	available
		fd20:8ble:b255:814e:32bd:f35c:832c:5a09:1234	available
		ks1.local:15696	available

8 entries were displayed.

### Enabling external key management in ONTAP 9.5 and earlier

You can use one or more KMIP servers to secure the keys the cluster uses to access encrypted data. You can connect up to four KMIP servers to a node. A minimum of two servers is recommended for redundancy and disaster recovery.

#### Before you begin

- The KMIP SSL client and server certificates must have been installed.
- You must be a cluster administrator to perform this task.
- You must configure the MetroCluster environment before you enable encryption.

#### About this task

ONTAP configures KMIP server connectivity for all nodes in the cluster.

#### Steps

1. Configure key manager connectivity for cluster nodes:

```
security key-manager setup
```

The key manager setup wizard opens.

2. Enter the appropriate response at each prompt.

3. Add a KMIP server:

```
security key-manager add -address key_management_server_ipaddress
```

```
cluster1::> security key-manager add -address 20.1.1.1
```

4. Add an additional KMIP server for redundancy:

```
security key-manager add -address key_management_server_ipaddress
```

```
cluster1::> security key-manager add -address 20.1.1.2
```

5. Verify that all configured KMIP servers are connected:

```
security key-manager show -status
```

For complete command syntax, see the man page.

```
cluster1::> security key-manager show -status
```

Node	Port	Registered Key Manager	Status
-----			
cluster1-01	5696	20.1.1.1	available
cluster1-01	5696	20.1.1.2	available

cluster1-02	5696	20.1.1.1	available
cluster1-02	5696	20.1.1.2	available

## Enabling onboard key management in ONTAP 9.6 and later (NVE)

You can use the Onboard Key Manager to secure the keys that the cluster uses to access encrypted data. You must enable Onboard Key Manager on each cluster that accesses an encrypted volume or a self-encrypting disk.

### Before you begin

- You must be a cluster administrator to perform this task.
- You must configure the MetroCluster environment before you configure an external key manager.

### About this task

You must run the `security key-manager onboard sync` command each time you add a node to the cluster.

If you have a MetroCluster configuration you must run `security key-manager onboard enable` on the local cluster first, then run `security key-manager onboard sync` on the remote cluster, using the same passphrase on each.

By default, you are not required to enter the key manager passphrase when a node is rebooted. You can use the `cc-mode-enabled=yes` option to require that users enter the passphrase after a reboot.

For NVE, if you set `cc-mode-enabled=yes`, volumes you create with the `volume create` and `volume move start` commands are automatically encrypted. For `volume create`, you need not specify `-encrypt true`. For `volume move start`, you need not specify `-encrypt-destination true`.

**Note:** When the Onboard Key Manager is enabled in Common Criteria mode (`cc-mode-enabled=yes`), system behavior is changed in the following ways:

- The system monitors for consecutive failed cluster passphrase attempts when operating in Common Criteria mode.

If you fail to enter the correct cluster passphrase at boot, encrypted volumes are not mounted. To correct this, you must reboot the node and enter the correct cluster passphrase. Once booted, the system allows up to 5 consecutive attempts to correctly enter the cluster passphrase in a 24-hour period for any command that requires the cluster passphrase as a parameter. If the limit is reached (for example, you have failed to correctly enter the cluster passphrase 5 times in a row) then you must either wait for the 24-hour timeout period to elapse, or you must reboot the node, in order to reset the limit.

- System image updates use the NetApp RSA-3072 code signing certificate together with SHA-384 code signed digests to check the image integrity instead of the usual NetApp RSA-2048 code signing certificate and SHA-256 code signed digests.

The upgrade command verifies that the image contents have not been altered or corrupted by checking various digital signatures. The image update process proceeds to the next step if validation succeeds; otherwise, the image update fails. See the “cluster image” man page for information concerning system updates.

**Note:** The Onboard Key Manager stores keys in volatile memory. Volatile memory contents are cleared when the system is rebooted or halted. Under normal operating conditions, volatile memory contents will be cleared within 30s when a system is halted.

## Steps

1. Start the key manager setup wizard:

```
security key-manager onboard enable -cc-mode-enabled yes|no
```

**Note:** Set `cc-mode-enabled=yes` to require that users enter the key manager passphrase after a reboot. For NVE, if you set `cc-mode-enabled=yes`, volumes you create with the `volume create` and `volume move start` commands are automatically encrypted. The `-cc-mode-enabled` option is not supported in MetroCluster configurations.

The `security key-manager onboard enable` command replaces the `security key-manager setup` command.

The following example starts the key manager setup command on `cluster1` without requiring that the passphrase be entered after every reboot:

```
cluster1::> security key-manager onboard enable

Enter the cluster-wide passphrase for onboard key management in Vserver "cluster1":: <32..256
ASCII characters long text>
Reenter the cluster-wide passphrase: <32..256 ASCII characters long text>
```

2. At the passphrase prompt, enter a passphrase between 32 and 256 characters, or for "cc-mode", a passphrase between 64 and 256 characters.

**Note:** If the specified "cc-mode" passphrase is less than 64 characters, there is a five-second delay before the key manager setup wizard displays the passphrase prompt again.

3. At the passphrase confirmation prompt, reenter the passphrase.
4. Verify that the authentication keys have been created:

```
security key-manager key query -key-type NSE-AK
```

**Note:** The `security key-manager key query` command replaces the `security key-manager query key` command. For complete command syntax, see the man page.

The following example verifies that authentication keys have been created for `cluster1`:

```
cluster1::> security key-manager key query -key-type NSE-AK
Vserver: cluster1
Key Manager: onboard
Node: node1

Key Tag                                Key Type  Restored
-----
node1                                    NSE-AK    yes
Key ID: 000000000000000020000000000001000c11b3863f78c2273343d7ec5a67762e000000000000000
node1                                    NSE-AK    yes
Key ID: 00000000000000002000000000001006f4e2513353a674305872a4c9f3bf7970000000000000000

Vserver: svml
Key Manager: onboard
Node: node1
Key Server: keyserver.svml.com:5965

Key Tag                                Key Type  Restored
-----
eb9f8311-e8d8-487e-9663-7642d7788a75  VEK       yes
Key ID: 000000000000000020000000000004001cb18336f7c8223743d3e75c6a7726e0000000000000000
9d09cbbf-0da9-4696-87a1-8e083d8261bb  VEK       yes
Key ID: 00000000000000002000000000000406f4e2e1533356a470385274a9c3ffb9770000000000000000

Vserver: cluster1
Key Manager: onboard
Node: node2

Key Tag                                Key Type  Restored
-----
node1                                    NSE-AK    yes
Key ID: 00000000000000002000000000001000c11b3863f78c2273343d7ec5a67762e0000000000000000
node1                                    NSE-AK    yes
Key ID: 00000000000000002000000000001006f4e2513353a674305872a4c9f3bf7970000000000000000
```

```
Vserver: svml
Key Manager: onboard
Node: node2
Key Server: keyserver.svml.com:5965

Key Tag                                Key Type  Restored
-----
eb9f8311-e8d8-487e-9663-7642d7788a75  VEK       yes
Key ID: 000000000000000020000000000004001cb18336f7c8223743d3e75c6a7726e0000000000000000
9d09cbbf-0da9-4696-87a1-8e083d8261bb    VEK       yes
Key ID: 000000000000000020000000000004064f2e1533356a470385274a9c3ffb97700000000000000000
```

**After you finish**

Copy the passphrase to a secure location outside the storage system for future use.

All key management information is automatically backed up to the replicated database (RDB) for the cluster. You should also back up the information manually for use in case of a disaster.

**Related tasks**

*Backing up onboard key management information manually* on page 48

You should copy onboard key management information to a secure location outside the storage system whenever you configure the Onboard Key Manager passphrase.

**Enabling onboard key management in ONTAP 9.5 and earlier (NVE)**

You can use the Onboard Key Manager to secure the keys that the cluster uses to access encrypted data. You must enable Onboard Key Manager on each cluster that accesses an encrypted volume or a self-encrypting disk.

**Before you begin**

- If you are using NSE with an external key management (KMIP) server, you must have deleted the external key manager database.  
*Transitioning to onboard key management from external key management* on page 61
- You must be a cluster administrator to perform this task.
- You must configure the MetroCluster environment before you enable encryption.

**About this task**

You must run the `security key-manager setup` command each time you add a node to the cluster.

If you have a MetroCluster configuration, review these guidelines:

- In ONTAP 9.5, you must run `security key-manager setup` on the local cluster and `security key-manager setup -sync-metrocluster-config yes` on the remote cluster, using the same passphrase on each.
- Prior to ONTAP 9.5, you must run `security key-manager setup` on the local cluster, wait approximately 20 seconds, and then run `security key-manager setup` on the remote cluster, using the same passphrase on each.

By default, you are not required to enter the key manager passphrase when a node is rebooted. Starting with ONTAP 9.4, you can use the `-enable-cc-mode yes` option to require that users enter the passphrase after a reboot.

For NVE, if you set `-enable-cc-mode yes`, volumes you create with the `volume create` and `volume move start` commands are automatically encrypted. For `volume create`, you need not specify `-encrypt true`. For `volume move start`, you need not specify `-encrypt-destination true`.

**Note:** After a failed passphrase attempt, you must reboot the node again.

## Steps

1. Start the key manager setup wizard:

```
security key-manager setup -enable-cc-mode yes|no
```

**Note:** Starting with ONTAP 9.4, you can use the `-enable-cc-mode yes` option to require that users enter the key manager passphrase after a reboot. For NVE, if you set `-enable-cc-mode yes`, volumes you create with the `volume create` and `volume move start` commands are automatically encrypted.

The following example starts the key manager setup wizard on `cluster1` without requiring that the passphrase be entered after every reboot:

```
cluster1::> security key-manager setup
Welcome to the key manager setup wizard, which will lead you through
the steps to add boot information.
...
Would you like to use onboard key-management? {yes, no} [yes]:
Enter the cluster-wide passphrase: <32..256 ASCII characters long text>
Reenter the cluster-wide passphrase: <32..256 ASCII characters long text>
```

2. Enter **yes** at the prompt to configure onboard key management.
3. At the passphrase prompt, enter a passphrase between 32 and 256 characters, or for "cc-mode", a passphrase between 64 and 256 characters.

**Note:** If the specified "cc-mode" passphrase is less than 64 characters, there is a five-second delay before the key manager setup wizard displays the passphrase prompt again.

4. At the passphrase confirmation prompt, reenter the passphrase.
5. Verify that keys are configured for all nodes:

```
security key-manager key show
```

For the complete command syntax, see the man page.

```
cluster1::> security key-manager key show

Node: node1
Key Store: onboard
Key ID                                     Used By
-----
0000000000000000020000000000010059851742AF2703FC91369B7DB47C4722 NSE-AK
000000000000000002000000000001008C07CC0AF1EF49E0105300EFC83004BF NSE-AK

Node: node2
Key Store: onboard
Key ID                                     Used By
-----
0000000000000000020000000000010059851742AF2703FC91369B7DB47C4722 NSE-AK
000000000000000002000000000001008C07CC0AF1EF49E0105300EFC83004BF NSE-AK
```

## After you finish

Copy the passphrase to a secure location outside the storage system for future use.

All key management information is automatically backed up to the replicated database (RDB) for the cluster. You should also back up the information manually for use in case of a disaster.

## Related tasks

[Backing up onboard key management information manually](#) on page 48



You should copy onboard key management information to a secure location outside the storage system whenever you configure the Onboard Key Manager passphrase.

## Enabling onboard key management in newly added nodes

You can use the Onboard Key Manager to secure the keys that the cluster uses to access encrypted data. You must enable Onboard Key Manager on each cluster that accesses an encrypted volume or a self-encrypting disk.

**Note:** You must run the `security key-manager setup` command each time you add a node to the cluster. If you add a node to a cluster that has onboard key management configured, you will run this command to refresh the missing keys.

If you have a MetroCluster configuration, review these guidelines:

- Starting with ONTAP 9.6, you must run `security key-manager onboard enable` on the local cluster first, then run `security key-manager onboard sync` on the remote cluster, using the same passphrase on each.
- In ONTAP 9.5, you must run `security key-manager setup` on the local cluster and `security key-manager setup -sync-metrocluster-config yes` on the remote cluster, using the same passphrase on each.
- Prior to ONTAP 9.5, you must run `security key-manager setup` on the local cluster, wait approximately 20 seconds, and then run `security key-manager setup` on the remote cluster, using the same passphrase on each.

By default, you are not required to enter the key manager passphrase when a node is rebooted. Starting with ONTAP 9.4, you can use the `-enable-cc-mode yes` option to require that users enter the passphrase after a reboot.

For NVE, if you set `-enable-cc-mode yes`, volumes you create with the `volume create` and `volume move start` commands are automatically encrypted. For `volume create`, you need not specify `-encrypt true`. For `volume move start`, you need not specify `-encrypt-destination true`.

**Note:** After a failed passphrase attempt, you must reboot the node again.

## Encrypting volume data with NVE

Starting with ONTAP 9.7, aggregate and volume encryption is enabled by default when you have the NVE license and onboard or external key management. For ONTAP 9.6 and earlier, you can enable encryption on a new volume or on an existing volume. You must have installed the NVE license and enabled key management before you can enable volume encryption. NVE is FIPS-140-2 level 1 compliant.

## Enabling aggregate-level encryption with NVE license

Starting with ONTAP 9.7, newly created aggregates and volumes are encrypted by default when you have the NVE license and onboard or external key management. Starting with ONTAP 9.6, you can use aggregate-level encryption to assign keys to the containing aggregate for the volumes to be encrypted. Volumes you create in the aggregate are encrypted by default. You can override the default when you encrypt the volume.

### Before you begin

You must be a cluster administrator to perform this task.

### About this task

You must use aggregate-level encryption if you plan to perform inline or background aggregate-level deduplication. Aggregate-level deduplication is otherwise not supported by NVE.

An aggregate enabled for aggregate-level encryption is called an *NAE volume* (for NetApp Aggregate Encryption). Plain text volumes are not supported in NAE aggregates.

### Steps

1. Enable or disable aggregate-level encryption:

To...	Use this command...
Create an NAE aggregate with ONTAP 9.7 or later	<code>storage aggregate create -aggregate <i>aggregate_name</i> -node <i>node_name</i></code>
Create an NAE aggregate with ONTAP 9.6	<code>storage aggregate create -aggregate <i>aggregate_name</i> -node <i>node_name</i> -encrypt-with-aggr-key true</code>
Convert a non-NAE aggregate to an NAE aggregate	<code>storage aggregate modify -aggregate <i>aggregate_name</i> -node <i>node_name</i> -encrypt-with-aggr-key true</code>
Convert an NAE aggregate to a non-NAE aggregate	<code>storage aggregate modify -aggregate <i>aggregate_name</i> -node <i>node_name</i> -encrypt-with-aggr-key false</code>

For complete command syntax, see the man pages.

The following command enables aggregate-level encryption on **aggr1**:

- ONTAP 9.7 or later:

```
cluster1::> storage aggregate create -aggregate aggr1
```

- ONTAP 9.6 or earlier:

```
cluster1::> storage aggregate create -aggregate aggr1 -encrypt-with-aggr-key true
```

2. Verify that the aggregate is enabled for encryption:

```
storage aggregate show -fields encrypt-with-aggr-key
```

For complete command syntax, see the man page.

The following command verifies that **aggr1** is enabled for encryption:

```
cluster1::> storage aggregate show -fields encrypt-with-aggr-key
aggregate          encrypt-aggr-key
-----
aggr0_vsim4        false
aggr1               true
2 entries were displayed.
```

### After you finish

Run the `volume create` command to create the encrypted volumes.

If you are using a KMIP server to store the encryption keys for a node, ONTAP automatically "pushes" an encryption key to the server when you encrypt a volume.

## Enabling encryption on a new volume

You can use the `volume create` command to enable encryption on a new volume.

### About this task

Starting with ONTAP 9.2, you can enable encryption on a SnapLock volume.

Starting with ONTAP 9.4, if you enable "cc-mode" when you set up the Onboard Key Manager, volumes you create with the `volume create` command are automatically encrypted, whether or not you specify `-encrypt true`.

Starting with ONTAP 9.6, you can use aggregate-level encryption to assign keys to the containing aggregate for the volumes to be encrypted. Volumes you create in the aggregate are encrypted by default. You can use the `-encrypt` option to override the default when you create the volume.

Starting with ONTAP 9.7, newly created volumes are encrypted by default when you have the NVE license and onboard or external key management.

A volume encrypted with a unique key is called an *NVE volume*. A volume encrypted with an aggregate-level key is called an *NAE volume* (for NetApp Aggregate Encryption). Plaintext volumes are not supported in NAE aggregates.

### Steps

1. Create a new volume and specify whether encryption is enabled on the volume:

To create...	Use this command...
An ONTAP 9.7 or later NAE volume	<code>volume create -vserver SVM_name -volume volume_name -aggregate aggregate_name</code>
An ONTAP 9.6 NAE volume (assuming aggregate-level encryption is enabled)	<code>volume create -vserver SVM_name -volume volume_name -aggregate aggregate_name</code>
An ONTAP 9.7 or later NVE volume	<code>volume create -vserver SVM_name -volume volume_name -aggregate aggregate_name</code>
An ONTAP 9.6 or earlier NVE volume	<code>volume create -vserver SVM_name -volume volume_name -aggregate aggregate_name -encrypt true</code>
A plain text volume	<code>volume create -vserver SVM_name -volume volume_name -aggregate aggregate_name -encrypt false</code>

For complete command syntax, see the man page for the command.

Starting with ONTAP 9.7 or later, the following command creates an NAE volume named **vol1** on **aggr1**:

```
cluster1::> volume create -vserver vs1 -volume vol1 -aggregate aggr1
```

Using ONTAP 9.6, assuming aggregate-level encryption is enabled, the following command creates an NAE volume named **vol1** on **aggr1**:

```
cluster1::> volume create -vserver vs1 -volume vol1 -aggregate aggr1
```

Starting with ONTAP 9.7 or later, the following command creates an NVE volume named **vol2** on **aggr1**:

```
cluster1::> volume create -vserver vs1 -volume vol2 -aggregate aggr1
```

Using ONTAP 9.6 or earlier, the following command creates an NVE volume named **vol2** on **aggr1**:

```
cluster1::> volume create -vserver vs1 -volume vol2 -aggregate aggr1 -encrypt true
```

The following command creates a plaintext volume named **vol3** on **aggr1**:

```
cluster1::> volume create -vserver vs1 -volume vol3 -aggregate aggr1 -encrypt false
```

2. Verify that volumes are enabled for encryption:

```
volume show -is-encrypted true
```

For complete command syntax, see the man page for the command.

The following command displays the encrypted volumes on **cluster2**:

```
cluster2::> volume show -is-encrypted true
```

Vserver	Volume	Aggregate	State	Type	Size	Available	Used
vs1	vol1	aggr2	online	RW	200GB	160.0GB	20%

### Result

If you are using a KMIP server to store the encryption keys for a node, ONTAP automatically "pushes" an encryption key to the server when you encrypt a volume.

## Enabling encryption on an existing volume with the volume encryption conversion start command

Starting with ONTAP 9.3, you can use the `volume encryption conversion start` command to enable encryption of an existing volume "in place," without having to move the volume to a different location.

### About this task

Once you start a conversion operation, it must complete. If you encounter a performance issue during the operation, you can run the `volume encryption conversion pause` command to pause the operation, and the `volume encryption conversion resume` command to resume the operation.

**Note:** You cannot use `volume encryption conversion start` to convert a SnapLock volume.

### Steps

1. Enable encryption on an existing volume:

```
volume encryption conversion start -vserver SVM_name -volume volume_name
```

For complete command syntax, see the man page for the command.

The following command enables encryption on the existing volume **vol1**:

```
cluster1::> volume encryption conversion start -vserver vs1 -volume vol1
```

The system creates an encryption key for the volume. The data on the volume is encrypted.

2. Verify the status of the conversion operation:

```
volume encryption conversion show
```

For complete command syntax, see the man page for the command.

The following command displays the status of the conversion operation:

```
cluster1::> volume encryption conversion show
```

Vserver	Volume	Start Time	Status
vs1	vol1	9/18/2017 17:51:41	Phase 2 of 2 is in progress.

3. When the conversion operation is complete, verify that the volume is enabled for encryption:

```
volume show -is-encrypted true
```

For complete command syntax, see the man page for the command.

The following command displays the encrypted volumes on **cluster1**:

```
cluster1::> volume show -is-encrypted true
```

Vserver	Volume	Aggregate	State	Type	Size	Available	Used
vs1	vol1	aggr2	online	RW	200GB	160.0GB	20%

### Result

If you are using a KMIP server to store the encryption keys for a node, ONTAP automatically "pushes" an encryption key to the server when you encrypt a volume.

## Enabling encryption on an existing volume with the volume move start command

You can use the `volume move start` command to enable encryption by moving an existing volume. You must use `volume move start` in ONTAP 9.2 and earlier. You can use the same aggregate or a different aggregate.

### Before you begin

You must be a cluster administrator to perform this task, or an SVM administrator to whom the cluster administrator has delegated authority.

[Delegating authority to run the volume move command](#) on page 40

### About this task

You cannot use `volume move start` to enable encryption on a SnapLock or FlexGroup volume.

Starting with ONTAP 9.4, if you enable "cc-mode" when you set up the Onboard Key Manager, volumes you create with the `volume move start` command are automatically encrypted. You need not specify `-encrypt-destination true`.

Starting with ONTAP 9.6, you can use aggregate-level encryption to assign keys to the containing aggregate for the volumes to be moved. A volume encrypted with a unique key is called an *NVE volume*. A volume encrypted with an aggregate-level key is called an *NAE volume* (for NetApp Aggregate Encryption). Plaintext volumes are not supported in NAE aggregates.

### Steps

1. Move an existing volume and specify whether encryption is enabled on the volume:

To convert...	Use this command...
A plaintext volume to an NVE volume	<code>volume move start -vserver SVM_name -volume volume_name -destination-aggregate aggregate_name -encrypt-destination true</code>
An NVE or plaintext volume to an NAE volume (assuming aggregate-level encryption is enabled on the destination)	<code>volume move start -vserver SVM_name -volume volume_name -destination-aggregate aggregate_name -encrypt-with-aggr-key true</code>
An NAE volume to an NVE volume	<code>volume move start -vserver SVM_name -volume volume_name -destination-aggregate aggregate_name -encrypt-with-aggr-key false</code>
An NAE volume to a plaintext volume	<code>volume move start -vserver SVM_name -volume volume_name -destination-aggregate aggregate_name -encrypt-destination false -encrypt-with-aggr-key false</code>
An NVE volume to a plaintext volume	<code>volume move start -vserver SVM_name -volume volume_name -destination-aggregate aggregate_name -encrypt-destination false</code>

For complete command syntax, see the man page for the command.

The following command converts a plaintext volume named **vol1** to an NVE volume:

```
cluster1::> volume move start -vserver vs1 -volume vol1 -destination-aggregate aggr2 -  
encrypt-destination true
```

Assuming aggregate-level encryption is enabled on the destination, the following command converts an NVE or plaintext volume named **vol1** to an NAE volume:

```
cluster1::> volume move start -vserver vs1 -volume vol1 -destination-aggregate aggr2 -  
encrypt-with-aggr-key true
```

The following command converts an NAE volume named **vol2** to an NVE volume:

```
cluster1::> volume move start -vserver vs1 -volume vol2 -destination-aggregate aggr2 -  
encrypt-with-aggr-key false
```

The following command converts an NAE volume named **vol2** to a plaintext volume:

```
cluster1::> volume move start -vserver vs1 -volume vol2 -destination-aggregate aggr2 -  
encrypt-destination false -encrypt-with-aggr-key false
```

The following command converts an NVE volume named **vol2** to a plaintext volume:

```
cluster1::> volume move start -vserver vs1 -volume vol2 -destination-aggregate aggr2 -  
encrypt-destination false
```

2. View the encryption type of cluster volumes:

```
volume show -fields encryption-type none|volume|aggregate
```

The `encryption-type` field is available in ONTAP 9.6 and later.

For complete command syntax, see the man page for the command.

The following command displays the encryption type of volumes in **cluster2**:

```
cluster2::> volume show -fields encryption-type  
  
vserver  volume  encryption-type  
-----  -  
vs1      vol1     none  
vs2      vol2     volume  
vs3      vol3     aggregate
```

3. Verify that volumes are enabled for encryption:

```
volume show -is-encrypted true
```

For complete command syntax, see the man page for the command.

The following command displays the encrypted volumes on **cluster2**:

```
cluster2::> volume show -is-encrypted true  
  
Vserver  Volume  Aggregate  State  Type  Size  Available  Used  
-----  -  
vs1      vol1     aggr2      online  RW   200GB  160.0GB  20%
```

**Result**

If you are using a KMIP server to store the encryption keys for a node, ONTAP automatically "pushes" an encryption key to the server when you encrypt a volume.

## Enabling node root volume encryption

Beginning in ONTAP 9.8, you can use NetApp Volume Encryption to protect the root volume of your node.

### Before you begin

- Your system must be using an HA configuration.  
Root volume encryption is not supported on single node configurations.
- Your node root volume must already be created.
- Your system must have an onboard key manager or an external key management server using the Key Management Interoperability Protocol (KMIP).

### About this task

**Note:** This procedure applies to the node root volume. It does not apply to SVM root volumes. SVM root volumes can be protected through aggregate-level encryption.

Once root volume encryption begins, it must complete. You cannot pause the operation. Once encryption is complete, you cannot assign a new key to the root volume and you cannot perform a secure-purge operation.

### Steps

1. Encrypt the root volume:

```
volume encryption conversion start -vserver SVM_name -volume root_vol_name
```

2. Verify the status of the conversion operation:

```
volume encryption conversion show
```

3. When the conversion operation is complete, verify that the volume is encrypted:

```
volume show -fields
```

The following shows example output for an encrypted volume.

```
::> volume show -vserver xyz -volume vol0 -fields is-encrypted
vserver    volume  is-encrypted
-----
xyz        vol0    true
```

## Configuring NetApp hardware-based encryption

---

NetApp hardware-based encryption supports full-disk encryption (FDE) of data as it is written. The data cannot be read without an encryption key stored on the firmware. The encryption key, in turn, is accessible only to an authenticated node.

### Understanding NetApp hardware-based encryption

A node authenticates itself to a self-encrypting drive using an authentication key retrieved from an external key management server or Onboard Key Manager:

- The external key management server is a third-party system in your storage environment that serves keys to nodes using the Key Management Interoperability Protocol (KMIP). It is a best practice to configure external key management servers on a different storage system from your data.
- The Onboard Key Manager is a built-in tool that serves authentication keys to nodes from the same storage system as your data.

You can use NetApp Volume Encryption with hardware-based encryption to “double encrypt” data on self-encrypting drives.

**Note:** AFF A220, AFF A800, FAS2720, FAS2750, and later systems store core dumps on their boot device. When self-encrypting drives are enabled on these systems, the core dump is also encrypted.

### Supported drive types

Two types of self-encrypting drive are supported:

- Self-encrypting FIPS-certified SAS or NVMe drives are supported on all FAS and AFF systems. These drives, called *FIPS drives*, conform to the requirements of Federal Information Processing Standard Publication 140-2, level 2. The certified capabilities enable protections in addition to encryption, such as preventing denial-of-service attacks on the drive. FIPS drives cannot be mixed with other types of drives on the same node or HA pair.
- Starting with ONTAP 9.6, self-encrypting NVMe drives that have not undergone FIPS testing are supported on AFF A800 and A320 systems. These drives, called *SEDs*, offer the same encryption capabilities as FIPS drives, but can be mixed with non-SEDs on the same node or HA pair.

### When to use KMIP servers

Although it is less expensive and typically more convenient to use the onboard key manager, you should set up KMIP servers if any of the following are true:

- Your encryption key management solution must comply with FIPS 140-2 level 2 or higher.
- You need a multi-cluster solution, with centralized management of encryption keys.
- Your business requires the added security of storing authentication keys on a system or in a location different from the data.

### Support details

The following table shows important hardware encryption support details. See the Interoperability Matrix for the latest information about supported KMIP servers, storage systems, and disk shelves.



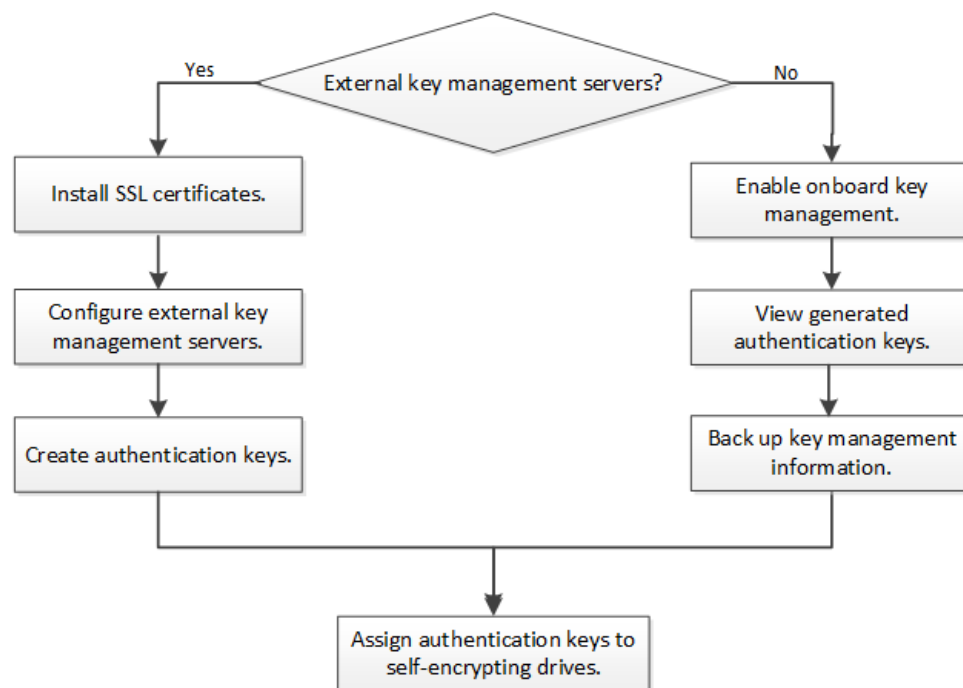
Resource or feature	Support details
Non-homogeneous disk sets	<ul style="list-style-type: none"> <li>FIPS drives cannot be mixed with other types of drives on the same node or HA pair. Conforming HA pairs can coexist with non-conforming HA pairs in the same cluster.</li> <li>SEDs can be mixed with non-SEDs on the same node or HA pair.</li> </ul>
Drive type	<ul style="list-style-type: none"> <li>FIPS drives can be SAS or NVMe drives.</li> <li>SEDs must be NVMe drives.</li> </ul>
10 Gb network interfaces	Starting with ONTAP 9.3, KMIP key management configurations support 10 Gb network interfaces for communications with external key management servers.
Ports for communication with the key management server	Starting with ONTAP 9.3, you can use any storage controller port for communication with the key management server. Otherwise, you should use port e0m for communication with key management servers. Depending on the storage controller model, certain network interfaces might not be available during the boot process for communication with key management servers.
MetroCluster (MCC)	<ul style="list-style-type: none"> <li>NVMe drives support MCC.</li> <li>SAS drives do not support MCC.</li> </ul>

**Related information**

[NetApp Hardware Universe](#)

## Hardware-based encryption workflow

You must configure key management services before the cluster can authenticate itself to the self-encrypting drive. You can use an external key management server or an onboard key manager.



## Configuring external key management

You can use one or more external key management servers to secure the keys that the cluster uses to access encrypted data. An external key management server is a third-party system in your

storage environment that serves keys to nodes using the Key Management Interoperability Protocol (KMIP).

**Note:** For ONTAP 9.1 and earlier versions, node management LIFs must be assigned to ports that are configured with the node management role before you can use the external key manager.

**Note:** NetApp Volume Encryption (NVE) supports Onboard Key Manager in ONTAP 9.1 and later. In ONTAP 9.3 and later, NVE supports external key management (KMIP) and Onboard Key Manager.

### Collecting network information in ONTAP 9.2 and earlier

If you are using ONTAP 9.2 or earlier, you should fill out the network configuration worksheet before enabling external key management.

**Note:** Starting with ONTAP 9.3, the system discovers all needed network information automatically.

Item	Notes	Value
Key management network interface name		
Key management network interface IP address	IP address of node management LIF, in IPv4 or IPv6 format	
Key management network interface IPv6 network prefix length	If you are using IPv6, the IPv6 network prefix length	
Key management network interface subnet mask		
Key management network interface gateway IP address		
IPv6 address for the cluster network interface	Required only if you are using IPv6 for the key management network interface	
Port number for each KMIP server	Optional. The port number must be the same for all KMIP servers. If you do not provide a port number, it defaults to port 5696, which is the Internet Assigned Numbers Authority (IANA) assigned port for KMIP.	
Key tag name	Optional. The key tag name is used to identify all keys belonging to a node. The default key tag name is the node name.	

#### Related information

[NetApp Technical Report 3954: NetApp Storage Encryption Preinstallation Requirements and Procedures for IBM Tivoli Lifetime Key Manager](#)

[NetApp Technical Report 4074: NetApp Storage Encryption Preinstallation Requirements and Procedures for SafeNet KeySecure](#)

## Installing SSL certificates on the cluster

The cluster and KMIP server use KMIP SSL certificates to verify each other's identity and establish an SSL connection. Before configuring the SSL connection with the KMIP server, you must install the KMIP client SSL certificates for the cluster, and the SSL public certificate for the root certificate authority (CA) of the KMIP server.

### Before you begin

- The time must be synchronized on the server creating the certificates, the KMIP server, and the cluster.
- You must have obtained the public SSL KMIP client certificate for the cluster.
- You must have obtained the private key associated with the SSL KMIP client certificate for the cluster.

The SSL KMIP client certificate must not be password-protected.

- You must have obtained the SSL public certificate for the root certificate authority (CA) of the KMIP server.

**Note:** You can install the client and server certificates on the KMIP server before or after installing the certificates on the cluster.

### About this task

In an HA pair, both nodes must use the same public and private KMIP SSL certificates. If you connect multiple HA pairs to the same KMIP server, all nodes in the HA pairs must use the same public and private KMIP SSL certificates.

### Steps

1. Install the SSL KMIP client certificates for the cluster:

```
security certificate install -vserver admin_svm_name -type client
```

You are prompted to enter the SSL KMIP public and private certificates.

```
cluster1::> security certificate install -vserver cluster1 -type client
```

2. Install the SSL public certificate for the root certificate authority (CA) of the KMIP server:

```
security certificate install -vserver admin_svm_name -type server-ca
```

```
cluster1::> security certificate install -vserver cluster1 -type server-ca
```

## Enabling external key management in ONTAP 9.6 and later (HW-based)

You can use one or more KMIP servers to secure the keys the cluster uses to access encrypted data. You can connect up to four KMIP servers to a node. A minimum of two servers is recommended for redundancy and disaster recovery.

### Before you begin

- The KMIP SSL client and server certificates must have been installed.
- You must be a cluster administrator to perform this task.
- You must configure the MetroCluster environment before you enable encryption.

### Steps

1. Configure key manager connectivity for the cluster:

```
security key-manager external enable -vserver admin_SVM -key-servers host_name |  
IP_address:port,... -client-cert client_certificate -server-ca-cert  
server_CA_certificates
```

**Note:** The `security key-manager external enable` command replaces the `security key-manager setup` command. You can run the `security key-manager`

external modify command to change the external key management configuration. For complete command syntax, see the man pages.

The following command enables external key management for `cluster1` with three external key servers. The first key server is specified using its hostname and port, the second is specified using an IP address and the default port, and the third is specified using an IPv6 address and port:

```
cluster1::> security key-manager external enable -key-servers ks1.local:15696,10.0.0.10,[fd20:8b1e:b255:814e:32bd:f35c:832c:5a09]:1234 -client-cert AdminVserverClientCert -server-ca-certs AdminVserverServerCaCert
```

2. Verify that all configured KMIP servers are connected:

```
security key-manager external show-status -node node_name -vserver SVM -key-server host_name/IP_address:port -key-server-status available|not-responding|unknown
```

**Note:** The `security key-manager external show-status` command replaces the `security key-manager show -status` command. For complete command syntax, see the man page.

```
cluster1::> security key-manager external show-status
```

Node	Vserver	Key Server	Status
node1	cluster1	10.0.0.10:5696	available
		fd20:8b1e:b255:814e:32bd:f35c:832c:5a09:1234	available
		ks1.local:15696	available
node2	cluster1	10.0.0.10:5696	available
		fd20:8b1e:b255:814e:32bd:f35c:832c:5a09:1234	available
		ks1.local:15696	available

6 entries were displayed.

## Enabling external key management in ONTAP 9.5 and earlier

You can use one or more KMIP servers to secure the keys the cluster uses to access encrypted data. You can connect up to four KMIP servers to a node. A minimum of two servers is recommended for redundancy and disaster recovery.

### Before you begin

- The KMIP SSL client and server certificates must have been installed.
- You must be a cluster administrator to perform this task.
- You must configure the MetroCluster environment before you enable encryption.

### About this task

ONTAP configures KMIP server connectivity for all nodes in the cluster.

### Steps

1. Configure key manager connectivity for cluster nodes:

```
security key-manager setup
```

The key manager setup wizard opens.

2. Enter the appropriate response at each prompt.
3. Add a KMIP server:

```
security key-manager add -address key_management_server_ipaddress
```

```
cluster1::> security key-manager add -address 20.1.1.1
```

4. Add an additional KMIP server for redundancy:

```
security key-manager add -address key_management_server_ipaddress
```

```
cluster1::> security key-manager add -address 20.1.1.2
```

5. Verify that all configured KMIP servers are connected:

```
security key-manager show -status
```

For complete command syntax, see the man page.

```
cluster1::> security key-manager show -status
```

Node	Port	Registered Key Manager	Status
cluster1-01	5696	20.1.1.1	available
cluster1-01	5696	20.1.1.2	available
cluster1-02	5696	20.1.1.1	available
cluster1-02	5696	20.1.1.2	available

## Creating authentication keys in ONTAP 9.6 and later

You can use the `security key-manager key create` command to create the authentication keys for a node and store them on the configured KMIP servers.

### Before you begin

You must be a cluster administrator to perform this task.

### About this task

If your security setup requires you to use different keys for data authentication and FIPS 140-2 authentication, you should create a separate key for each. If that is not the case, you can use the same authentication key for FIPS compliance that you use for data access.

ONTAP creates authentication keys for all nodes in the cluster.

- This command is not supported when onboard key management is enabled.
- You receive a warning if the configured key management servers are already storing more than 128 authentication keys.

You can use the `security key-manager key delete` command to delete any unused keys. The `security key-manager key delete` command fails if the given key is currently in use by ONTAP.

### Steps

1. Create the authentication keys for cluster nodes:

```
security key-manager key create -key-tag passphrase_label -prompt-for-key true|false
```

**Note:** Setting `prompt-for-key=true` causes the system to prompt the cluster administrator for the passphrase to use when authenticating encrypted drives. Otherwise, the system automatically generates a 32-byte passphrase.

The `security key-manager key create` command replaces the `security key-manager create-key` command. For complete command syntax, see the man page.

The following example creates the authentication keys for `cluster1`, automatically generating a 32-byte passphrase:

```
cluster1::> security key-manager key create  
Key ID:  
000000000000000000200000000001006268333f870860128fbe17d393e5083b0000000000000000
```

2. Verify that the authentication keys have been created:

```
security key-manager key query -node node
```

**Note:** The `security key-manager key query` command replaces the `security key-manager query key` command. For complete command syntax, see the man page.

The key ID displayed in the output is an identifier used to refer to the authentication key. It is not the actual authentication key or the data encryption key.

The following example verifies that authentication keys have been created for `cluster1`:

```
cluster1::> security key-manager key query
  Vserver: cluster1
  Key Manager: external
  Node: node1

Key Tag                               Key Type  Restored
-----
node1                                  NSE-AK    yes
  Key ID: 00000000000000000200000000001000c11b3863f78c2273343d7ec5a67762e0000000000000000
node1                                  NSE-AK    yes
  Key ID: 00000000000000000200000000001006f4e2513353a674305872a4c9f3bf7970000000000000000

  Vserver: cluster1
  Key Manager: external
  Node: node2

Key Tag                               Key Type  Restored
-----
node2                                  NSE-AK    yes
  Key ID: 00000000000000000200000000001000c11b3863f78c2273343d7ec5a67762e0000000000000000
node2                                  NSE-AK    yes
  Key ID: 00000000000000000200000000001006f4e2513353a674305872a4c9f3bf7970000000000000000
```

## Creating authentication keys in ONTAP 9.5 and earlier

You can use the `security key-manager create-key` command to create the authentication keys for a node and store them on the configured KMIP servers.

### Before you begin

You must be a cluster administrator to perform this task.

### About this task

If your security setup requires you to use different keys for data authentication and FIPS 140-2 authentication, you should create a separate key for each. If that is not the case, you can use the same authentication key for FIPS compliance that you use for data access.

ONTAP creates authentication keys for all nodes in the cluster.

- This command is not supported when onboard key management is enabled.
- You receive a warning if the configured key management servers are already storing more than 128 authentication keys.

You can use the key management server software to delete any unused keys, then run the command again.

### Steps

1. Create the authentication keys for cluster nodes:

```
security key-manager create-key
```

For complete command syntax, see the man page for the command.

**Note:** The key ID displayed in the output is an identifier used to refer to the authentication key. It is not the actual authentication key or the data encryption key.

The following example creates the authentication keys for `cluster1`:

```
cluster1::> security key-manager create-key
(security key-manager create-key)
Verifying requirements...
```

```
Node: cluster1-01
Creating authentication key...
Authentication key creation successful.
Key ID: F1CB30AFF1CB30B0010100000000000A68B167F92DD54196297159B5968923C

Node: cluster1-01
Key manager restore operation initialized.
Successfully restored key information.

Node: cluster1-02
Key manager restore operation initialized.
Successfully restored key information.
```

2. Verify that the authentication keys have been created:

**security key-manager query**

For complete command syntax, see the man page.

The following example verifies that authentication keys have been created for **cluster1**:

```
cluster1::> security key-manager query

(security key-manager query)

      Node: cluster1-01
      Key Manager: 20.1.1.1
      Server Status: available

Key Tag      Key Type  Restored
-----
cluster1-01  NSE-AK   yes
      Key ID: F1CB30AFF1CB30B001010000000000A68B167F92DD54196297159B5968923C

      Node: cluster1-02
      Key Manager: 20.1.1.1
      Server Status: available

Key Tag      Key Type  Restored
-----
cluster1-02  NSE-AK   yes
      Key ID: F1CB30AFF1CB30B001010000000000A68B167F92DD54196297159B5968923C
```

## Assigning a data authentication key to a FIPS drive or SED (external key management)

You can use the `storage encryption disk modify` command to assign a data authentication key to a FIPS drive or SED. Cluster nodes use this key to lock or unlock encrypted data on the drive.

### Before you begin

You must be a cluster administrator to perform this task.

### About this task

A self-encrypting drive is protected from unauthorized access only if its authentication key ID is set to a non-default value. The manufacturer secure ID (MSID), which has key ID 0x0, is the standard default value for SAS drives. For NVMe drives, the standard default value is a null key, represented as a blank key ID. When you assign the key ID of a self-encrypting drive, the system changes its authentication key ID to a non-default value.

### Steps

1. Assign a data authentication key to a FIPS drive or SED:

```
storage encryption disk modify -disk disk_ID -data-key-id key_ID
```

For complete command syntax, see the man page for the command.

**Note:** You can use the `security key-manager query -key-type NSE-AK` command to view key IDs.

```
cluster1::> storage encryption disk modify -disk 0.10.* -data-key-id  
F1CB30AFF1CB30B0010100000000000A68B167F92DD54196297159B5968923C
```

```
Info: Starting modify on 14 disks.  
View the status of the operation by using the  
storage encryption disk show-status command.
```

2. Verify that the authentication keys have been assigned:

```
storage encryption disk show
```

For complete command syntax, see the man page.

```
cluster1::> storage encryption disk show  
Disk      Mode Data Key ID  
-----  
0.0.0     data F1CB30AFF1CB30B0010100000000000A68B167F92DD54196297159B5968923C  
0.0.1     data F1CB30AFF1CB30B0010100000000000A68B167F92DD54196297159B5968923C  
[...]
```

## Configuring onboard key management

You can use the Onboard Key Manager to authenticate cluster nodes to a FIPS drive or SED. The Onboard Key Manager is a built-in tool that serves authentication keys to nodes from the same storage system as your data. The Onboard Key Manager is FIPS-140-2 level 1 compliant.

### Enabling onboard key management in ONTAP 9.6 and later

You can use the Onboard Key Manager to secure the keys that the cluster uses to access encrypted data. You must enable Onboard Key Manager on each cluster that accesses an encrypted volume or a self-encrypting disk.

#### Before you begin

- If you are using NSE with an external key management (KMIP) server, you must have deleted the external key manager database.  
[Transitioning to onboard key management from external key management](#) on page 61
- You must be a cluster administrator to perform this task.
- You must configure the MetroCluster environment before the Onboard key manager is configured.

#### About this task

You must run the `security key-manager onboard enable` command each time you add a node to the cluster. In MetroCluster configurations, you must run `security key-manager onboard enable` on the local cluster first, then run `security key-manager onboard sync` on the remote cluster, using the same passphrase on each.

By default, you are not required to enter the key manager passphrase when a node is rebooted. Except in MetroCluster, you can use the `cc-mode-enabled=yes` option to require that users enter the passphrase after a reboot.

**Note:** When the Onboard Key Manager is enabled in Common Criteria mode (`cc-mode-enabled=yes`), system behavior is changed in the following ways:

- The system monitors for consecutive failed cluster passphrase attempts when operating in Common Criteria mode.

If NetApp Storage Encryption (NSE) is enabled and you fail to enter the correct cluster passphrase at boot, the system cannot authenticate to its drives and automatically reboots. To correct this, you must enter the correct cluster passphrase at the boot prompt. Once booted, the system allows up to 5 consecutive attempts to correctly enter the cluster passphrase in a 24-hour period for any command that requires the cluster passphrase as a parameter. If the limit is reached (for example, you have failed to correctly enter the cluster passphrase 5



times in a row) then you must either wait for the 24-hour timeout period to elapse, or you must reboot the node, in order to reset the limit.

- System image updates use the NetApp RSA-3072 code signing certificate together with SHA-384 code signed digests to check the image integrity instead of the usual NetApp RSA-2048 code signing certificate and SHA-256 code signed digests.

The upgrade command verifies that the image contents have not been altered or corrupted by checking various digital signatures. The image update process proceeds to the next step if validation succeeds; otherwise, the image update fails. See the “cluster image” man page for information concerning system updates.

**Note:** The Onboard Key Manager stores keys in volatile memory. Volatile memory contents are cleared when the system is rebooted or halted. Under normal operating conditions, volatile memory contents will be cleared within 30s when a system is halted.

### Steps

1. Start the key manager setup command:

```
security key-manager onboard enable -cc-mode-enabled yes|no
```

**Note:** Set `cc-mode-enabled=yes` to require that users enter the key manager passphrase after a reboot. The `-cc-mode-enabled` option is not supported in MetroCluster configurations.

The `security key-manager onboard enable` command replaces the `security key-manager setup` command.

The following example starts the key manager setup command on `cluster1` without requiring that the passphrase be entered after every reboot:

```
cluster1::> security key-manager onboard enable

Enter the cluster-wide passphrase for onboard key management in Vserver "cluster1":: <32..256
ASCII characters long text>
Reenter the cluster-wide passphrase: <32..256 ASCII characters long text>
```

2. At the passphrase prompt, enter a passphrase between 32 and 256 characters, or for "cc-mode", a passphrase between 64 and 256 characters.

**Note:** If the specified "cc-mode" passphrase is less than 64 characters, there is a five-second delay before the key manager setup wizard displays the passphrase prompt again.

3. At the passphrase confirmation prompt, reenter the passphrase.
4. Verify that the authentication keys have been created:

```
security key-manager key query -node node
```

**Note:** The `security key-manager key query` command replaces the `security key-manager query key` command. For complete command syntax, see the man page.

The following example verifies that authentication keys have been created for `cluster1`:

```
cluster1::> security key-manager key query
Vserver: cluster1
Key Manager: onboard
Node: node1

Key Tag                               Key Type  Restored
-----
node1                                  NSE-AK    yes
Key ID: 000000000000000002000000000001000c11b3863f78c2273343d7ec5a67762e000000000000000
node1                                  NSE-AK    yes
Key ID: 000000000000000002000000000001006f4e2513353a674305872a4c9f3bf797000000000000000

Vserver: cluster1
Key Manager: onboard
```

```
Node: node2
Key Tag                               Key Type  Restored
-----
node1                                  NSE-AK    yes
Key ID: 000000000000000000002000000000001000c11b3863f78c2273343d7ec5a67762e0000000000000000
node2                                  NSE-AK    yes
Key ID: 000000000000000000002000000000001006f4e2513353a674305872a4c9f3bf7970000000000000000
```

**After you finish**

Copy the passphrase to a secure location outside the storage system for future use.

All key management information is automatically backed up to the replicated database (RDB) for the cluster. You should also back up the information manually for use in case of a disaster.

**Related tasks**

[Backing up onboard key management information manually](#) on page 48

You should copy onboard key management information to a secure location outside the storage system whenever you configure the Onboard Key Manager passphrase.

**Enabling onboard key management in ONTAP 9.5 and earlier**

You can use the Onboard Key Manager to secure the keys that the cluster uses to access encrypted data. You must enable Onboard Key Manager on each cluster that accesses an encrypted volume or a self-encrypting disk.

**Before you begin**

- If you are using NSE with an external key management (KMIP) server, you must have deleted the external key manager database.  
[Transitioning to onboard key management from external key management](#) on page 61
- You must be a cluster administrator to perform this task.
- You must configure the MetroCluster environment before you enable encryption.

**About this task**

You must run the `security key-manager setup` command each time you add a node to the cluster.

If you have a MetroCluster configuration, review these guidelines:

- In ONTAP 9.5, you must run `security key-manager setup` on the local cluster and `security key-manager setup -sync-metrocluster-config yes` on the remote cluster, using the same passphrase on each.
- Prior to ONTAP 9.5, you must run `security key-manager setup` on the local cluster, wait approximately 20 seconds, and then run `security key-manager setup` on the remote cluster, using the same passphrase on each.

By default, you are not required to enter the key manager passphrase when a node is rebooted. Starting with ONTAP 9.4, you can use the `-enable-cc-mode yes` option to require that users enter the passphrase after a reboot.

For NVE, if you set `-enable-cc-mode yes`, volumes you create with the `volume create` and `volume move start` commands are automatically encrypted. For `volume create`, you need not specify `-encrypt true`. For `volume move start`, you need not specify `-encrypt-destination true`.

**Note:** After a failed passphrase attempt, you must reboot the node again.

**Steps**

1. Start the key manager setup wizard:



You should copy onboard key management information to a secure location outside the storage system whenever you configure the Onboard Key Manager passphrase.

## Assigning a data authentication key to a FIPS drive or SED (onboard key management)

You can use the `storage encryption disk modify` command to assign a data authentication key to a FIPS drive or SED. Cluster nodes use this key to access data on the drive.

### Before you begin

You must be a cluster administrator to perform this task.

### About this task

A self-encrypting drive is protected from unauthorized access only if its authentication key ID is set to a non-default value. The manufacturer secure ID (MSID), which has key ID 0x0, is the standard default value for SAS drives. For NVMe drives, the standard default value is a null key, represented as a blank key ID. When you assign the key ID of a self-encrypting drive, the system changes its authentication key ID to a non-default value.

### Steps

1. Assign a data authentication key to a FIPS drive or SED:

```
storage encryption disk modify -disk disk_ID -data-key-id key_ID
```

For complete command syntax, see the man page for the command.

**Note:** You can use the `security key-manager query -key-type NSE-AK` command to view key IDs.

```
cluster1::> storage encryption disk modify -disk 0.10.* -data-key-id  
F1CB30AFF1CB30B0010100000000000A68B167F92DD54196297159B5968923C
```

```
Info: Starting modify on 14 disks.  
View the status of the operation by using the  
storage encryption disk show-status command.
```

2. Verify that the authentication keys have been assigned:

```
storage encryption disk show
```

For complete command syntax, see the man page.

```
cluster1::> storage encryption disk show  
Disk      Mode Data Key ID  
-----  
0.0.0     data F1CB30AFF1CB30B0010100000000000A68B167F92DD54196297159B5968923C  
0.0.1     data F1CB30AFF1CB30B0010100000000000A68B167F92DD54196297159B5968923C  
[...]
```

## Assigning a FIPS 140-2 authentication key to a FIPS drive

You can use the `storage encryption disk modify` command with the `-fips-key-id` option to assign a FIPS 140-2 authentication key to a FIPS drive. Cluster nodes use this key for drive operations other than data access, such as preventing denial-of-service attacks on the drive.

### Before you begin

The drive firmware must support FIPS 140-2 compliance. The Interoperability Matrix contains information about supported drive firmware versions.

### About this task

Your security setup may require you to use different keys for data authentication and FIPS 140-2 authentication. If that is not the case, you can use the same authentication key for FIPS compliance that you use for data access.

### Steps

1. Assign a FIPS 140-2 authentication key to SEDs:

```
storage encryption disk modify -disk disk_id -fips-key-id fips_authentication_key_id
```

You can use the `security key-manager query` command to view key IDs.

```
cluster1::> storage encryption disk modify -disk 2.10.* -fips-key-id  
6A1E21D8000000000100000000000005A1FB4EE8F62FD6D8AE6754C9019F35A
```

```
Info: Starting modify on 14 disks.  
View the status of the operation by using the  
storage encryption disk show-status command.
```

2. Verify that the authentication key has been assigned:

```
storage encryption disk show -fips
```

For complete command syntax, see the man page.

```
cluster1::> storage encryption disk show -fips  
Disk      Mode FIPS-Compliance Key ID  
-----  
2.10.0    full 6A1E21D8000000000100000000000005A1FB4EE8F62FD6D8AE6754C9019F35A  
2.10.1    full 6A1E21D8000000000100000000000005A1FB4EE8F62FD6D8AE6754C9019F35A  
[...]
```

### Related information

[NetApp Interoperability Matrix Tool](#)

## Enabling cluster-wide FIPS-compliant mode for KMIP server connections

You can use the `security config modify` command with the `-is-fips-enabled` option to enable cluster-wide FIPS-compliant mode for data in flight. Doing so forces the cluster to use OpenSSL in FIPS mode when connecting to KMIP servers.

### Before you begin

- The storage controller must be configured in FIPS-compliant mode.
- All KMIP servers must support TLSv1.2. The system requires TLSv1.2 to complete the connection to the KMIP server when cluster-wide FIPS-compliant mode is enabled.

### About this task

When you enable cluster-wide FIPS-compliant mode, the cluster will automatically use only TLS1.2 and FIPS-validated cipher suites. Cluster-wide FIPS-compliant mode is disabled by default.

You must reboot cluster nodes manually after modifying the cluster-wide security configuration.

### Steps

1. Set the privilege level to advanced:

```
set -privilege advanced
```

2. Verify that TLSv1.2 is supported:

```
security config show -supported-protocols
```

For complete command syntax, see the man page.

```
cluster1::> security config show  
Cluster Security  
Interface FIPS Mode Supported Protocols Supported Ciphers Config Ready  
-----  
SSL        false      TLSv1.2, TLSv1.1, TLSv1 ALL:!LOW:  
!aNULL:!EXP:  
!eNULL
```

3. Enable cluster-wide FIPS-compliant mode:

```
security config modify -is-fips-enabled true -interface SSL
```

For complete command syntax, see the man page.

4. Reboot cluster nodes manually.
5. Verify that cluster-wide FIPS-compliant mode is enabled:

```
security config show
```

```
cluster1::> security config show
Cluster
Interface FIPS Mode Supported Protocols Supported Ciphers Cluster Security
-----
SSL true TLSv1.2, TLSv1.1 ALL:!LOW:
!aNULL:!EXP:
!eNULL:!RC4 Config Ready
yes
```

## Managing NetApp encryption

---

ONTAP offers a rich set of services for managing encryption. You can restore authentication keys, replace SSL certificates, return SEDs to service when authentication keys are no longer available, and much more.

### Unencrypting volume data

You can use the `volume move start` command to move and unencrypt volume data.

#### Before you begin

You must be a cluster administrator to perform this task, or an SVM administrator to whom the cluster administrator has delegated authority.

[Delegating authority to run the volume move command](#) on page 40

#### Steps

1. Move an existing encrypted volume and unencrypt the data on the volume:

```
volume move start -vserver SVM_name -volume volume_name -destination-aggregate  
aggregate_name -encrypt-destination false
```

For complete command syntax, see the man page for the command.

The following command moves an existing volume named `vol1` to the destination aggregate `aggr3` and unencrypts the data on the volume:

```
cluster1::> volume move start -vserver vs1 -volume vol1 -destination-aggregate aggr3 -  
encrypt-destination false
```

The system deletes the encryption key for the volume. The data on the volume is unencrypted.

2. Verify that the volume is disabled for encryption:

```
volume show -encryption
```

For complete command syntax, see the man page for the command.

The following command displays whether volumes on `cluster1` are encrypted:

```
cluster1::> volume show -encryption
```

Vserver	Volume	Aggregate	State	Encryption State
vs1	vol1	aggr1	online	none

### Moving an encrypted volume

You can use the `volume move start` command to move an encrypted volume. The moved volume can reside on the same aggregate or a different aggregate.

#### Before you begin

You must be a cluster administrator to perform this task, or an SVM administrator to whom the cluster administrator has delegated authority.

[Delegating authority to run the volume move command](#) on page 40

#### About this task

The move will fail if the destination node or destination volume does not support volume encryption.

The `-encrypt-destination` option for `volume move start` defaults to `true` for encrypted volumes. Requiring you to specify explicitly that you do not want the destination volume to be encrypted ensures that you do not inadvertently unencrypt the data on the volume.

### Steps

1. Move an existing encrypted volume and leave the data on the volume encrypted:

```
volume move start -vserver SVM_name -volume volume_name -destination-aggregate aggregate_name
```

For complete command syntax, see the man page for the command.

The following command moves an existing volume named `vol1` to the destination aggregate `aggr3` and leaves the data on the volume encrypted:

```
cluster1::> volume move start -vserver vs1 -volume vol1 -destination-aggregate aggr3
```

2. Verify that the volume is enabled for encryption:

```
volume show -is-encrypted true
```

For complete command syntax, see the man page for the command.

The following command displays the encrypted volumes on `cluster1`:

```
cluster1::> volume show -is-encrypted true
```

Vserver	Volume	Aggregate	State	Type	Size	Available	Used
vs1	vol1	aggr3	online	RW	200GB	160.0GB	20%

## Delegating authority to run the volume move command

You can use the `volume move` command to encrypt an existing volume, move an encrypted volume, or unencrypt a volume. Cluster administrators can run `volume move` command themselves, or they can delegate the authority to run the command to SVM administrators.

### About this task

By default, SVM administrators are assigned the `vsadmin` role, which does not include the authority to move volumes. You must assign the `vsadmin-volume` role to SVM administrators to enable them to run the `volume move` command.

### Step

Delegate authority to run the `volume move` command:

```
security login modify -vserver SVM_name -user-or-group-name user_or_group_name -application application -authmethod authentication_method -role vsadmin-volume
```

For complete command syntax, see the man page for the command.

The following command grants the SVM administrator authority to run the `volume move` command.

```
cluster1::>security login modify -vserver engData -user-or-group-name SVM-admin -application ssh -authmethod domain -role vsadmin-volume
```



## Changing the encryption key for a volume with the volume encryption rekey start command

It is a security best practice to change the encryption key for a volume periodically. Starting with ONTAP 9.3, you can use the `volume encryption rekey start` command to change the encryption key.

### About this task

Once you start a rekey operation, it must complete. There is no returning to the old key. If you encounter a performance issue during the operation, you can run the `volume encryption rekey pause` command to pause the operation, and the `volume encryption rekey resume` command to resume the operation.

Until the rekey operation finishes, the volume will have two keys. New writes and their corresponding reads will use the new key. Otherwise, reads will use the old key.

**Note:** You cannot use `volume encryption rekey start` to rekey a SnapLock volume.

### Steps

1. Change an encryption key:

```
volume encryption rekey start -vserver SVM_name -volume volume_name
```

The following command changes the encryption key for `vol1` on SVM `vs1`:

```
cluster1::> volume encryption rekey start -vserver vs1 -volume vol1
```

2. Verify the status of the rekey operation:

```
volume encryption rekey show
```

For complete command syntax, see the man page for the command.

The following command displays the status of the rekey operation:

```
cluster1::> volume encryption rekey show
```

Vserver	Volume	Start Time	Status
vs1	vol1	9/18/2017 17:51:41	Phase 2 of 2 is in progress.

3. When the rekey operation is complete, verify that the volume is enabled for encryption:

```
volume show -is-encrypted true
```

For complete command syntax, see the man page for the command.

The following command displays the encrypted volumes on `cluster1`:

```
cluster1::> volume show -is-encrypted true
```

Vserver	Volume	Aggregate	State	Type	Size	Available	Used
vs1	vol1	aggr2	online	RW	200GB	160.0GB	20%

## Changing the encryption key for a volume with the volume move start command

It is a security best practice to change the encryption key for a volume periodically. You can use the `volume move start` command to change the encryption key. You must use `volume move`

start in ONTAP 9.2 and earlier. The moved volume can reside on the same aggregate or a different aggregate.

### Before you begin

You must be a cluster administrator to perform this task, or an SVM administrator to whom the cluster administrator has delegated authority.

[Delegating authority to run the volume move command](#) on page 40

### About this task

You cannot use `volume move start` to rekey a SnapLock or FlexGroup volume.

### Steps

1. Move an existing volume and change the encryption key:

```
volume move start -vserver SVM_name -volume volume_name -destination-aggregate aggregate_name -generate-destination-key true
```

For complete command syntax, see the man page for the command.

The following command moves an existing volume named `vol1` to the destination aggregate `aggr2` and changes the encryption key:

```
cluster1::> volume move start -vserver vs1 -volume vol1 -destination-aggregate aggr2 -generate-destination-key true
```

A new encryption key is created for the volume. The data on the volume remains encrypted.

2. Verify that the volume is enabled for encryption:

```
volume show -is-encrypted true
```

For complete command syntax, see the man page for the command.

The following command displays the encrypted volumes on `cluster1`:

```
cluster1::> volume show -is-encrypted true
```

Vserver	Volume	Aggregate	State	Type	Size	Available	Used
vs1	vol1	aggr2	online	RW	200GB	160.0GB	20%

## Rotating authentication keys for NetApp Storage Encryption

You can rotate authentication keys when using NetApp Storage Encryption (NSE).

### About this task

Rotating authentication keys in an NSE environment is supported if you are using External Key Manager (KMIP).

**Note:** Rotating authentication keys in an NSE environment is not supported for Onboard Key Manager (OKM).

### Steps

1. Use the `security key-manager create-key` command to generate new authentication keys.  
You need to generate new authentication keys before you can change the authentication keys.
2. Use the `storage encryption disk modify -disk * -data-key-id` command to change the authentication keys.

### Related tasks

[Creating authentication keys in ONTAP 9.6 and later](#) on page 29

You can use the `security key-manager key create` command to create the authentication keys for a node and store them on the configured KMIP servers.

[Assigning a data authentication key to a FIPS drive or SED \(external key management\)](#) on page 31

You can use the `storage encryption disk modify` command to assign a data authentication key to a FIPS drive or SED. Cluster nodes use this key to lock or unlock encrypted data on the drive.

## Deleting an encrypted volume

You can use the `volume delete` command to delete an encrypted volume.

### Before you begin

- You must be a cluster administrator to perform this task, or an SVM administrator to whom the cluster administrator has delegated authority.  
[Delegating authority to run the volume move command](#) on page 40
- The volume must be offline.

### Step

Delete an encrypted volume:

```
volume delete -vserver SVM_name -volume volume_name
```

For complete command syntax, see the man page for the command.

The following command deletes an encrypted volume named `vol1`:

```
cluster1::> volume delete -vserver vs1 -volume vol1
```

Enter `yes` when you are prompted to confirm deletion.

The system deletes the encryption key for the volume after 24 hours.

Use `volume delete` with the `-force true` option to delete a volume and destroy the corresponding encryption key immediately. For more information, see the man page.

### After you finish

You can use the `volume recovery-queue` command to recover a deleted volume during the retention period after issuing the `volume delete` command:

```
volume recovery-queue SVM_name -volume volume_name
```

[How to use the Volume Recovery feature](#)

## Securely purging data on an encrypted volume

Beginning in ONTAP 9.4, you can use `secure purge` to non-disruptively scrub data on NVE-enabled volumes. Scrubbing data on an encrypted volume ensures that it cannot be recovered from the physical media, for example, in cases of “spillage,” where data traces may have been left behind when blocks were overwritten, or for securely deleting a vacating tenant's data.

Secure purge works only for previously deleted files on NVE-enabled volumes. You cannot scrub an unencrypted volume. You must use KMIP servers to serve keys, not the onboard key manager.

Secure purge functions differently depending upon your version of ONTAP.

- In ONTAP 9.8 and later:
  - Secure purge is supported by MetroCluster and FlexGroup.

- If the volume being purged is the source of a SnapMirror relationship, you do not have to break the SnapMirror relationship to perform a secure purge.
- The re-encryption method is different for volumes using SnapMirror data protection versus volumes not using SnapMirror data protection (DP) or those using SnapMirror extended data protection..
  - By default, volumes using SnapMirror data protection (DP) mode re-encrypt data using the volume move re-encryption method.
  - By default, volumes not using SnapMirror data protection or volumes using SnapMirror extended data protection (XDP) mode use the in-place re-encryption method.
  - These defaults can be changed using the `secure purge re-encryption-method [volume-move|in-place-rekey]` command.
- By default, all Snapshot copies in FlexVol volumes are automatically deleted during the secure purge operation. By default, Snapshots in FlexGroup volumes and volumes using SnapMirror data protection are not automatically deleted during the secure purge operation. These defaults can be changed using the `secure purge delete-all-snapshots [true|false].` command.
- In ONTAP 9.8 and earlier:
  - Secure purge does not support the following:
    - FlexClone
    - SnapVault
    - FabricPool
  - If the volume being purged is the source of a SnapMirror relationship, you must break the SnapMirror relationship before you can purge the volume.  
If there are busy Snapshot copies in the volume, you must release the Snapshot copies before you can purge the volume. For example, you may need to split a FlexClone volume from its parent.
- Successfully invoking the secure-purge feature triggers a volume move that re-encrypts the remaining, unpurged data with a new key.  
The moved volume remains on the current aggregate. The old key is automatically destroyed, ensuring that purged data cannot be recovered from the storage media.

## Securely purging data on an encrypted volume without a SnapMirror relationship

Beginning in ONTAP 9.4, you can use secure-purge to non-disruptively "scrub" data on NVE-enabled volumes.

### Before you begin

- You must be a cluster administrator to perform this task.
- Advanced privileges are required for this task.

### About this task

Secure-purge may take from several minutes to many hours to complete, depending on the amount of data in the deleted files. You can use the `volume encryption secure-purge show` command to view the status of the operation. You can use the `volume encryption secure-purge abort` command to terminate the operation.

**Note:** In order to do a secure purge on a SAN host, you must delete the entire LUN containing the files you want to purge, or you must be able to punch holes in the LUN for the blocks that belong to the files you want purge. If you cannot delete the LUN or your host operating system does not support punching holes in the LUN, you cannot perform a secure purge.

### Steps

1. Delete the files or the LUN you want to securely purge.
  - On a NAS client, delete the files you want to securely purge.
  - On a SAN host, delete the LUN you want to securely purge or punch holes in the LUN for the blocks that belong to the files you want to purge.

2. On the storage system, change to advanced privilege level:

```
set -privilege advanced
```

3. If the files you want to securely purge are in snapshots, delete the snapshots:

```
snapshot delete -vserver SVM_name -volume vol_name -snapshot
```

4. Securely purge the deleted files:

```
volume encryption secure-purge start -vserver SVM_name -volume volume_name
```

The following command securely purges the deleted files on `vol1` on SVM `vs1`:

```
cluster1::> volume encryption secure-purge start -vserver vs1 -volume vol1
```

5. Verify the status of the secure-purge operation:

```
volume encryption secure-purge show
```

## Securely purging data on an encrypted volume with an Asynchronous SnapMirror relationship

Beginning in ONTAP 9.8, you can use `secure-purge` to non-disruptively "scrub" data on NVE-enabled volumes with an Asynchronous SnapMirror relationship.

### Before you begin

- You must be a cluster administrator to perform this task.
- Advanced privileges are required for this task.

### About this task

`Secure-purge` may take from several minutes to many hours to complete, depending on the amount of data in the deleted files. You can use the `volume encryption secure-purge show` command to view the status of the operation. You can use the `volume encryption secure-purge abort` command to terminate the operation.

**Note:** In order to do a secure purge on a SAN host, you must delete the entire LUN containing the files you want to purge, or you must be able to punch holes in the LUN for the blocks that belong to the files you want to purge. If you cannot delete the LUN or your host operating system does not support punching holes in the LUN, you cannot perform a secure purge.

### Steps

1. On the storage system, change to advanced privilege level:

```
set -privilege advanced
```

2. Delete the files or the LUN you want to securely purge.

- On a NAS client, delete the files you want to securely purge.
- On a SAN host, delete the LUN you want to securely purge or punch holes in the LUN for the blocks that belong to the files you want to purge.

3. Prepare `vol_A` in the Asynchronous relationship to be securely purged:

```
volume encryption secure-purge start -vserver SVM_name -volume volume_name -prepare true
```

Repeat this step on each volume in your Asynchronous SnapMirror relationship.

4. If the files you want to securely purge are in snapshots, delete the snapshots:

```
snapshot delete -vserver SVM_name -volume vol_name -snapshot
```

5. If the files you want to securely purge are in the base snapshots, do the following:

- a. Create a snapshot on vol\_A in the Asynchronous SnapMirror relationship:

```
volume snapshot create -snapshot snapshot_name -vserver SVM_name -volume vol_name
```

- b. Update the SnapMirror to move the base snapshot forward:

```
snapmirror update -source-snapshot snapshot_name -destination-path destination_path
```

Repeat this step for each volume in the Asynchronous SnapMirror relationship.

- c. Repeat steps (a) and (b) equal to the number of base snapshots plus one.

For example, if you have two base snapshots, you should repeat steps (a) and (b) three times.

- d. Verify that the base snapshot is present:

```
snapshot show -vserver SVM_name -volume vol_name
```

- e. Delete the base snapshot:

```
snapshot delete -vserver SVM_name -volume vol_name -snapshot snapshot
```

6. Securely purge the deleted files:

```
volume encryption secure-purge start -vserver SVM_name -volume volume_name
```

Repeat this step on each volume in the Asynchronous SnapMirror relationship.

The following command securely purges the deleted files on vol1 on SVM vs1:

```
cluster1::> volume encryption secure-purge start -vserver vs1 -volume vol1
```

7. Verify the status of the secure-purge operation:

```
volume encryption secure-purge show
```

## Scrubbing data on an encrypted volume with a Synchronous SnapMirror relationship

Beginning in ONTAP 9.8, you can use secure-purge to non-disruptively "scrub" data on NVE-enabled volumes with a Synchronous SnapMirror relationship.

### Before you begin

- You must be a cluster administrator to perform this task.
- Advanced privileges are required for this task.

### About this task

Secure-purge may take from several minutes to many hours to complete, depending on the amount of data in the deleted files. You can use the `volume encryption secure-purge show` command to view the status of the operation. You can use the `volume encryption secure-purge abort` command to terminate the operation.

**Note:** In order to do a secure purge on a SAN host, you must delete the entire LUN containing the files you want to purge, or you must be able to punch holes in the LUN for the blocks that belong to the files you want purge. If you cannot delete the LUN or your host operating system does not support punching holes in the LUN, you cannot perform a secure purge.

### Steps

1. On the storage system, change to advanced privilege level:

```
set -privilege advanced
```

2. Delete the files or the LUN you want to securely purge.

- On a NAS client, delete the files you want to securely purge.
- On a SAN host, delete the LUN you want to securely purge or punch holes in the LUN for the blocks that belong to the files you want to purge.

3. Prepare vol\_A in the Asynchronous relationship be securely purged:

```
volume encryption secure-purge start -vserver SVM_name -volume volume_name -prepare true
```

Repeat this step for the other volume in your Synchronous SnapMirror relationship.

4. If the files you want to securely purge are in snapshots, delete the snapshots:

```
snapshot delete -vserver SVM_name -volume vol_A -snapshot snapshot
```

5. If the secure purge file is in the base or common snapshots, update the SnapMirror to move the common snapshot forward:

```
snapmirror update -source-snapshot snapshot_name -destination-path destination_path
```

There are two common snapshots, so this command must be issued twice.

6. If the secure purge file is in the application consistent snapshot, delete the snapshot on both volumes in the Synchronous SnapMirror relationship:

```
snapshot delete -vserver SVM_name -volume vol_name -snapshot snapshot
```

Perform this step on both volumes.

7. Securely purge the deleted files:

```
volume encryption secure-purge start -vserver SVM_name -volume volume_name
```

Repeat this step on each volume in the synchronous SnapMirror relationship.

The following command securely purges the deleted files on vol1 on SMV vs1.

```
cluster1::> volume encryption secure-purge start -vserver vs1 -volume vol1
```

8. Verify the status of the secure-purge operation:

```
volume encryption secure-purge show
```

## Changing the onboard key management passphrase

It is a security best practice to change the onboard key management passphrase periodically. You should copy the new onboard key management passphrase to a secure location outside the storage system for future use.

### Before you begin

- You must be a cluster or SVM administrator to perform this task.
- Advanced privileges are required for this task.

### Steps

1. Change to advanced privilege level:

```
set -privilege advanced
```

2. Change the onboard key management passphrase:

For this ONTAP version...	Use this command...
ONTAP 9.6 and later	<code>security key-manager onboard update-passphrase</code>
ONTAP 9.5 and earlier	<code>security key-manager update-passphrase</code>

For complete command syntax, see the man pages.

The following ONTAP 9.6 command lets you change the onboard key management passphrase for `cluster1`:

```
cluster1::> security key-manager onboard update-passphrase
Warning: This command will reconfigure the cluster passphrase for onboard
key management for Vserver "cluster1".
Do you want to continue? {y|n}: y
Enter current passphrase:
Enter new passphrase:
```

3. Enter **y** at the prompt to change the onboard key management passphrase.
4. Enter the current passphrase at the current passphrase prompt.
5. At the new passphrase prompt, enter a passphrase between 32 and 256 characters, or for "cc-mode", a passphrase between 64 and 256 characters.

**Note:** If the specified "cc-mode" passphrase is less than 64 characters, there is a five-second delay before the key manager setup wizard displays the passphrase prompt again.

6. At the passphrase confirmation prompt, reenter the passphrase.

### After you finish

In a MetroCluster environment, you must update the passphrase on the partner cluster:

- In ONTAP 9.5 and earlier, you must run `security key-manager update-passphrase` with the same passphrase on the partner cluster.
- In ONTAP 9.6 and later, you are prompted to run `security key-manager onboard sync` with the same passphrase on the partner cluster.

You should copy the onboard key management passphrase to a secure location outside the storage system for future use.

You should back up key management information manually whenever you change the onboard key management passphrase.

[Backing up onboard key management information manually](#) on page 48

## Backing up onboard key management information manually

You should copy onboard key management information to a secure location outside the storage system whenever you configure the Onboard Key Manager passphrase.

### Before you begin

- You must be a cluster administrator to perform this task.
- Advanced privileges are required for this task.

### About this task

All key management information is automatically backed up to the replicated database (RDB) for the cluster. You should also back up key management information manually for use in case of a disaster.

### Steps

1. Change to advanced privilege level:  
`set -privilege advanced`
2. Display the key management backup information for the cluster:

For this ONTAP version...	Use this command...
ONTAP 9.6 and later	<code>security key-manager onboard show-backup</code>





If you are running ONTAP 9.7 or earlier, or if you are running ONTAP 9.8 or later and your root volume is not encrypted, skip this step.

- a. Boot the node to the boot menu and select option (10) Set onboard key management recovery secrets.
  - b. Enter **y** to use this option.
  - c. At the prompt, enter the onboard key management passphrase for the cluster.
  - d. At the prompt, enter the backup key data.  
The node returns to the boot menu..
  - e. From the boot menu, select option (1) Normal Boot.
2. Restore the key:

For this ONTAP version...	Use this command...
ONTAP 9.6 and later	<code>security key-manager onboard sync</code>
ONTAP 9.5 and earlier	<code>security key-manager setup -node node</code>

For complete command syntax, see the man pages.

The following ONTAP 9.6 command synchronize the keys in the onboard key hierarchy:

```
cluster1::> security key-manager onboard sync
Enter the cluster-wide passphrase for onboard key management in Vserver "cluster1":< <32..256
ASCII characters long text>
```

3. At the passphrase prompt, enter the onboard key management passphrase for the cluster.

## Restoring external key management encryption keys

You can manually restore external key management encryption keys and "push" them to a different node. You might want to do this if you are restarting a node that was down temporarily when you created the keys for the cluster.

### Before you begin

You must be a cluster or SVM administrator to perform this task.

### About this task

In ONTAP 9.6 and later, you can use the `security key-manager key query -node node_name` command to verify if your key needs to be restored.

In ONTAP 9.5 and earlier, you can use the `security key-manager key show` command to verify if your key needs to be restored.

### Steps

1. If you are running ONTAP 9.8 or later and your root volume is encrypted, do the following:  
If you are running ONTAP 9.7 or earlier, or if you are running ONTAP 9.8 or later and your root volume is not encrypted, skip this step.
  - a. Set the bootargs:

```
setenv kmip.init.ipaddr <ip-address>
setenv kmip.init.netmask <netmask>
setenv kmip.init.gateway <gateway>
setenv kmip.init.interface e0M
boot_ontap
```

- b. Boot the node to the boot menu and select option (11) Configure node for external key management.
  - c. Follow prompts to enter management certificate.  
 After all management certificate information is entered, the system returns to the boot menu.
  - d. From the boot menu, select option (1) Normal Boot.
2. Restore the key:

For this ONTAP version...	Use this command...
ONTAP 9.6 and later	<code>security key-manager external restore -vserver SVM -node node -key-server host_name/IP_address:port -key-id key_id -key-tag key_tag</code>
ONTAP 9.5 and earlier	<code>security key-manager restore -node node -address IP_address -key-id key_id -key-tag key_tag</code>

**Note:** *node* defaults to all nodes. For complete command syntax, see the man pages. This command is not supported when onboard key management is enabled.

The following ONTAP 9.6 command restores external key management authentication keys to all nodes in **cluster1**:

```
cluster1::> security key-manager external restore
```

## Replacing SSL certificates

All SSL certificates have an expiration date. You must update your certificates before they expire to prevent loss of access to authentication keys.

### Before you begin

- You must have obtained the replacement public and private certificates for the cluster.
- You must have obtained the replacement public certificate for the KMIP server.
- You must be a cluster or SVM administrator to perform this task.

**Note:** You can install the replacement client and server certificates on the KMIP server before or after installing the certificates on the cluster.

### Steps

1. Install the new KMIP server-ca certificate:

```
security certificate install -type server-ca -vserver <>
```

2. Install the new KMIP client certificate:

```
security certificate install -type client -vserver <>
```

3. Update the key manager configuration to use the newly installed certificates:

```
security key-manager external modify -vserver <> -client-cert <> -server-ca-certs <>
```

**Note:** Updating the key manager configuration to use the newly installed certificates will return an error if the public/private keys of the new client certificate are different from the keys previously configured. Contact NetApp support for instructions on how to override this error.

## Replacing a FIPS drive or SED

You can replace a FIPS drive or SED the same way you replace an ordinary disk. Make sure to assign new data authentication keys to the replacement drive. For a FIPS drive, you may also want to assign a new FIPS 140-2 authentication key.

### Before you begin

- You must know the key ID for the authentication key used by the drive.
- You must be a cluster administrator to perform this task.

### Steps

1. Ensure that the disk has been marked as failed:

```
storage disk show -broken
```

For complete command syntax, see the man page.

```
cluster1::> storage disk show -broken
Original Owner: cluster1-01
Checksum Compatibility: block
```

Disk	Outage	Reason	HA	Shelf	Bay	Chan	Pool	Type	RPM	Usable Size	Physical Size
0.0.0	admin	failed	0b	1	0	A	Pool0	FCAL	10000	132.8GB	133.9GB
0.0.7	admin	removed	0b	2	6	A	Pool1	FCAL	10000	132.8GB	134.2GB

```
[...]
```

2. Remove the failed disk and replace it with a new FIPS drive or SED, following the instructions in the hardware guide for your disk shelf model.
3. Assign ownership of the newly replaced disk:

```
storage disk assign -disk disk_name -owner node
```

For complete command syntax, see the man page.

```
cluster1::> storage disk assign -disk 2.1.1 -owner cluster1-01
```

4. Confirm that the new disk has been assigned:

```
storage encryption disk show
```

For complete command syntax, see the man page.

```
cluster1::> storage encryption disk show
Disk      Mode Data Key ID
-----
0.0.0     data F1CB30AFF1CB30B0010100000000000A68B167F92DD54196297159B5968923C
0.0.1     data F1CB30AFF1CB30B0010100000000000A68B167F92DD54196297159B5968923C
1.10.0    data F1CB30AFF1CB30B0010100000000000CF0EFD81EA9F6324EA97B369351C56AC
1.10.1    data F1CB30AFF1CB30B0010100000000000CF0EFD81EA9F6324EA97B369351C56AC
2.1.1     open 0x0
[...]
```

5. Assign the data authentication keys to the FIPS drive or SED.  
[Assigning a data authentication key to a FIPS drive or SED \(external key management\)](#) on page 31
6. If necessary, assign a FIPS 140-2 authentication key to the FIPS drive.  
[Assigning a FIPS 140-2 authentication key to a FIPS drive](#) on page 36

## Making data on a FIPS drive or SED inaccessible

If you want to make data on a FIPS drive or SED permanently inaccessible, but keep the drive's unused space available for new data, you can sanitize the disk. If you want to make data permanently inaccessible and you do not need to reuse the drive, you can destroy it.

- **Disk sanitization**  
When you sanitize a self-encrypting drive, the system changes the disk encryption key to a new random value, resets the power-on lock state to false, and sets the key ID to a default value, either the manufacturer secure ID 0x0 (SAS drives) or a null key (NVMe drives). Doing so renders the data on the disk inaccessible and impossible to retrieve. You can reuse sanitized disks as non-zeroed spare disks.
- **Disk destroy**  
When you destroy a FIPS drive or SED, the system sets the disk encryption key to an unknown random value and locks the disk irreversibly. Doing so renders the disk permanently unusable and the data on it permanently inaccessible.

You can sanitize or destroy individual self-encrypting drives, or all the self-encrypting drives for a node.

### Choices

- [Sanitizing a FIPS drive or SED](#) on page 53
- [Destroying a FIPS drive or SED](#) on page 54
- [Emergency shredding of data on an FIPS drive or SED](#) on page 55

## Sanitizing a FIPS drive or SED

If you want to make data on a FIPS drive or SED permanently inaccessible, but keep the drive's unused space available for new data, you can use the `storage encryption disk sanitize` command to sanitize the drive.

### Before you begin

You must be a cluster administrator to perform this task.

### About this task

When you sanitize a self-encrypting drive, the system changes the disk encryption key to a new random value, resets the power-on lock state to false, and sets the key ID to a default value, either the manufacturer secure ID 0x0 (SAS drives) or a null key (NVMe drives). Doing so renders the data on the disk inaccessible and impossible to retrieve. You can reuse sanitized disks as non-zeroed spare disks.

### Steps

1. Migrate any data that needs to be preserved to an aggregate for a different disk.
2. Delete the aggregate on the FIPS drive or SED to be sanitized:

```
storage aggregate delete -aggregate aggregate_name
```

For complete command syntax, see the man page.

```
cluster1::> storage aggregate delete -aggregate aggr1
```

3. Identify the disk ID for the FIPS drive or SED to be sanitized:

```
storage encryption disk show
```

For complete command syntax, see the man page.

```
cluster1::> storage encryption disk show  
Disk      Mode Data Key ID  
-----
```

```
0.0.0 data F1CB30AFF1CB30B0010100000000000A68B167F92DD54196297159B5968923C
0.0.1 data F1CB30AFF1CB30B0010100000000000A68B167F92DD54196297159B5968923C
1.10.2 data F1CB30AFF1CB30B0010100000000000CF0EFD81EA9F6324EA97B369351C56AC
[...]
```

#### 4. Sanitize the drive:

```
storage encryption disk sanitize -disk disk_id
```

You can use this command to sanitize hot spare or broken disks only. To sanitize all disks regardless of type, use the `-force-all-state` option. For complete command syntax, see the man page.

**Note:** You are prompted to enter a confirmation phrase before continuing. Enter the phrase exactly as shown on the screen.

```
cluster1::> storage encryption disk sanitize -disk 1.10.2

Warning: This operation will cryptographically sanitize 1 spare or broken self-
encrypting disk on 1 node.
        To continue, enter sanitize disk: sanitize disk

Info: Starting sanitize on 1 disk.
      View the status of the operation using the
      storage encryption disk show-status command.
```

## Destroying a FIPS drive or SED

If you want to make data on a FIPS drive or SED permanently inaccessible and you do not need to reuse the drive, you can use the `storage encryption disk destroy` command to destroy the disk.

### Before you begin

You must be a cluster administrator to perform this task.

### About this task

When you destroy a FIPS drive or SED, the system sets the disk encryption key to an unknown random value and locks the drive irreversibly. Doing so renders the disk virtually unusable and the data on it permanently inaccessible. However, you can reset the disk to its factory-configured settings using the PSID printed on the disk's label. For more information, see [Returning a FIPS drive or SED to service when authentication keys are lost](#) on page 57.

**Note:** You should not destroy a FIPS drive or SED unless you have the Non-Returnable Disk Plus service (NRD Plus). Destroying a disk voids its warranty.

### Steps

1. Migrate any data that needs to be preserved to an aggregate for a different disk.
2. Delete the aggregate on the FIPS drive or SED to be destroyed:

```
storage aggregate delete -aggregate aggregate_name
```

For complete command syntax, see the man page.

```
cluster1::> storage aggregate delete -aggregate aggr1
```

3. Identify the disk ID for the FIPS drive or SED to be destroyed:

```
storage encryption disk show
```

For complete command syntax, see the man page.

```
cluster1::> storage encryption disk show
Disk      Mode Data Key ID
```

```
-----  
0.0.0  data  F1CB30AFF1CB30B0010100000000000A68B167F92DD54196297159B5968923C  
0.0.1  data  F1CB30AFF1CB30B0010100000000000A68B167F92DD54196297159B5968923C  
1.10.2 data  F1CB30AFF1CB30B0010100000000000CF0EFD81EA9F6324EA97B369351C56AC  
[...]
```

**4. Destroy the disk:**

```
storage encryption disk destroy -disk disk_id
```

For complete command syntax, see the man page.

**Note:** You are prompted to enter a confirmation phrase before continuing. Enter the phrase exactly as shown on the screen.

```
cluster1::> storage encryption disk destroy -disk 1.10.2  
  
Warning: This operation will cryptographically destroy 1 spare or broken  
self-encrypting disks on 1 node.  
You cannot reuse destroyed disks unless you revert  
them to their original state using the PSID value.  
To continue, enter  
destroy disk  
:destroy disk  
  
Info: Starting destroy on 1 disk.  
View the status of the operation by using the  
"storage encryption disk show-status" command.
```

### Emergency shredding of data on an FIPS drive or SED

In case of a security emergency, you can instantly prevent access to a FIPS drive or SED, even if power is not available to the storage system or the KMIP server.

**Before you begin**

- You must be using a KMIP server, and the KMIP server must be configured with an easily destroyed authentication item (for example, a smart card or USB drive).
- You must be a cluster administrator to perform this task.

**Step**

Perform emergency shredding of data on a FIPS drive or SED:

If...	Then...
Power is available to the storage system and you have time to take the storage system offline gracefully	<ol style="list-style-type: none"> <li>a. If the storage system is configured as an HA pair, disable takeover.</li> <li>b. Take all aggregates offline and delete them.</li> <li>c. Set the privilege level to advanced:                             <pre>set -privilege advanced</pre> </li> <li>d. If the drive is in FIPS-compliance mode, set the FIPS authentication key ID for the node back to the default MSID:                             <pre>storage encryption disk modify -disk * -fips-key-id 0x0</pre> </li> <li>e. Halt the storage system.</li> <li>f. Boot into maintenance mode.</li> <li>g. Sanitize or destroy the disks:                             <ul style="list-style-type: none"> <li>• If you want to make the data on the disks inaccessible and still be able to reuse the disks, sanitize the disks:                                     <pre>disk encrypt sanitize -all</pre> </li> <li>• If you want to make the data on the disks inaccessible and you do not need to save the disks, destroy the disks:                                     <pre>disk encrypt destroy disk_id1 disk_id2 ...</pre> </li> </ul> <p><b>Note:</b> The <code>disk encrypt sanitize</code> and <code>disk encrypt destroy</code> commands are reserved for maintenance mode only. These commands must be run on each HA node, and are not available for broken disks.</p> </li> <li>h. Repeat these steps for the partner node.</li> </ol> <p>This leaves the storage system in a permanently disabled state with all data erased. To use the system again, you must reconfigure it.</p>
Power is available to the storage system and you must shred the data immediately	<ol style="list-style-type: none"> <li>a. If the storage system is configured as an HA pair, disable takeover.</li> <li>b. Set the privilege level to advanced:                             <pre>set -privilege advanced</pre> </li> <li>c. Sanitize or destroy the disks:                             <ul style="list-style-type: none"> <li>• If you want to make the data on the disks inaccessible and still be able to reuse the disks, sanitize the disks:                                     <pre>storage encryption disk sanitize -disk * -force-all-states true</pre> </li> <li>• If you want to make the data on the disks inaccessible and you do not need to save the disks, destroy the disks:                                     <pre>storage encryption disk destroy -disk * -force-all-states true</pre> </li> </ul> </li> </ol> <p>The storage system panics, leaving the system in a permanently disabled state with all data erased. To use the system again, you must reconfigure it.</p>
Power is available to the KMIP server but not to the storage system	<ol style="list-style-type: none"> <li>a. Log in to the KMIP server.</li> <li>b. Destroy all keys associated with the FIPS drives or SEDs that contain the data you want to prevent access to.</li> </ol> <p>This prevents access to disk encryption keys by the storage system.</p>



If...	Then...
Power is not available to the KMIP server or the storage system	Destroy the authentication item for the KMIP server (for example, the smart card). This prevents access to disk encryption keys by the storage system.

For complete command syntax, see the man pages.

## Returning a FIPS drive or SED to service when authentication keys are lost

The system treats a FIPS drive or SED as broken if you lose the authentication keys for it permanently and cannot retrieve them from the KMIP server. Although you cannot access or recover the data on the disk, you can take steps to make the SED's unused space available again for data.

### Before you begin

You must be a cluster administrator to perform this task.

### About this task

You should use this process only if you are certain that the authentication keys for the FIPS drive or SED are permanently lost and that you cannot recover them.

### Step

Return a FIPS drive or SED to service:

If the SEDS are...	Use these steps...
Not in FIPS-compliance mode, or in FIPS-compliance mode and the FIPS key is available	<ol style="list-style-type: none"> <li>a. Sanitize the broken disk:  <code>storage encryption disk sanitize -disk <i>disk_id</i></code></li> <li>b. Set the privilege level to advanced:  <code>set -privilege advanced</code></li> <li>c. Unfail the sanitized disk:  <code>storage disk unfail -spare true -disk <i>disk_id</i></code></li> <li>d. Check whether the disk has an owner:  <code>storage disk show -disk <i>disk_id</i></code></li> <li>e. If the disk does not have an owner, assign one, then unfail the disk again:  <code>storage disk assign -owner <i>node</i> -disk <i>disk_id</i></code>  <code>storage disk unfail -spare true -disk <i>disk_id</i></code></li> <li>f. Verify that the disk is now a spare and ready to be reused in an aggregate:  <code>storage disk show -disk <i>disk_id</i></code></li> </ol>

---

<b>If the SEDS are...</b>	<b>Use these steps...</b>
In FIPS-compliance mode, the FIPS key is not available, and the SEDs have a PSID printed on the label	<p><b>a.</b> Obtain the PSID of the disk from the disk label.</p> <p><b>b.</b> Set the privilege level to advanced: <code>set -privilege advanced</code></p> <p><b>c.</b> Reset the disk to its factory-configured settings: <code>storage encryption disk revert-to-original-state -disk <i>disk_id</i> -psid <i>disk_physical_secure_id</i></code></p> <p><b>d.</b> Unfail the sanitized disk: <code>storage disk unfail -spare true -disk <i>disk_id</i></code></p> <p><b>e.</b> Check whether the disk has an owner: <code>storage disk show -disk <i>disk_id</i></code></p> <p><b>f.</b> If the disk does not have an owner, assign one, then unfail the disk again: <code>storage disk assign -owner <i>node</i> -disk <i>disk_id</i></code> <code>storage disk unfail -spare true -disk <i>disk_id</i></code></p> <p><b>g.</b> Verify that the disk is now a spare and ready to be reused in an aggregate: <code>storage disk show -disk <i>disk_id</i></code></p>

---

For complete command syntax, see the man pages.

## Returning a FIPS drive or SED to unprotected mode

A FIPS drive or SED is protected from unauthorized access only if the authentication key ID for the node is set to a value other than the default. You can return a FIPS drive or SED to unprotected mode by using the `storage encryption disk modify` command to set the key ID to the default.

### Before you begin

You must be a cluster administrator to perform this task.

### Steps

1. Set the privilege level to advanced:

```
set -privilege advanced
```

2. If a FIPS drive is running in FIPS-compliance mode, set the FIPS authentication key ID for the node back to the default MSID 0x0:

```
storage encryption disk modify -disk disk_id -fips-key-id 0x0
```

You can use the `security key-manager query` command to view key IDs.

```
cluster1::> storage encryption disk modify -disk 2.10.11 -fips-key-id 0x0
```

```
Info: Starting modify on 14 disks.  
View the status of the operation by using the  
storage encryption disk show-status command.
```

3. Set the data authentication key ID for the node back to the default MSID 0x0:

```
storage encryption disk modify -disk disk_id -data-key-id 0x0
```

The value of `-data-key-id` should be set to 0x0 whether you are returning a SAS or NVMe drive to unprotected mode.

You can use the `security key-manager query` command to view key IDs.

```
cluster1::> storage encryption disk modify -disk 2.10.11 -data-key-id 0x0  
Info: Starting modify on 14 disks.  
View the status of the operation by using the  
storage encryption disk show-status command.
```

## Deleting an external key manager connection

You can disconnect a KMIP server from a node when you no longer need the server. You might disconnect a KMIP server when you are transitioning to volume encryption, for example.

### Before you begin

You must be a cluster or SVM administrator to perform this task.

### About this task

When you disconnect a KMIP server from one node in an HA pair, the system automatically disconnects the server from all cluster nodes.

**Note:** If you plan to continue using external key management after disconnecting a KMIP server, make sure another KMIP server is available to serve authentication keys.

### Step

Disconnect a KMIP server from the current node:

For this ONTAP version...	Use this command...
ONTAP 9.6 and later	<code>security key-manager external remove-servers -vserver SVM -key-servers host_name/IP_address:port,...</code>
ONTAP 9.5 and earlier	<code>security key-manager delete -address key_management_server_ipaddress</code>

For complete command syntax, see the man pages.

The following ONTAP 9.6 command disables the connections to two external key management servers for `cluster1`, the first named `ks1`, listening on the default port 5696, the second with the IP address 10.0.0.20, listening on port 24482:

```
cluster1::> security key-manager external remove-servers -vserver cluster-1 -key-servers ks1,10.0.0.20:24482
```

## Modifying external key management server properties

Starting with ONTAP 9.6, you can use the `security key-manager external modify-server` command to change the I/O timeout and username of an external key management server.

### Before you begin

- You must be a cluster or SVM administrator to perform this task.
- Advanced privileges are required for this task.

### Steps

1. On the storage system, change to advanced privilege level:

```
set -privilege advanced
```

2. Modify external key manager server properties for the cluster:

```
security key-manager external modify-server -vserver admin_SVM -key-server host_name | IP_address:port,... -timeout 1...60 -username user_name
```

**Note:** The timeout value is expressed in seconds. If you modify the user name, you are prompted to enter a new password.

If you run the command at the cluster login prompt, *admin\_SVM* defaults to the admin SVM of the current cluster. You must be the cluster administrator to modify external key manager server properties.

The following command changes the timeout value to 45 seconds for the **cluster1** external key management server listening on the default port 5696:

```
cluster1::> security key-manager external modify-server -vserver cluster1 -key-server  
ks1.local -timeout 45
```

3. Modify external key manager server properties for an SVM (NVE only):

```
security key-manager external modify-server -vserver SVM -key-server host_name |  
IP_address:port,... -timeout 1...60 -username user_name
```

**Note:** The timeout value is expressed in seconds. If you modify the user name, you are prompted to enter a new password.

If you run the command at the SVM login prompt, *SVM* defaults to the current SVM. You must be the cluster or SVM administrator to modify external key manager server properties.

The following command changes the username and password of the **svm1** external key management server listening on the default port 5696:

```
svm1::> security key-manager external modify-server -vserver svm11 -key-server  
ks1.local -username svmluser  
Enter the password:  
Reenter the password:
```

4. Repeat the last step for any additional SVMs.

## Transitioning to external key management from onboard key management

If you want to switch to external key management from onboard key management, you must delete the onboard key management configuration before you can enable external key management.

### Before you begin

- For hardware-based encryption, you must reset the data keys of all FIPS drives or SEDs to the default value.  
[Returning a FIPS drive or SED to unprotected mode](#) on page 58
- For software-based encryption, you must unencrypt all volumes.  
[Unencrypting volume data](#) on page 39
- You must be a cluster administrator to perform this task.

### Step

Delete the onboard key management configuration for a cluster:

For this ONTAP version...	Use this command...
ONTAP 9.6 and later	<code>security key-manager onboard disable -vserver SVM</code>
ONTAP 9.5 and earlier	<code>security key-manager delete-key-database</code>

For complete command syntax, see the man pages.

The following ONTAP 9.6 command deletes the onboard key management configuration for **cluster1**:

```
cluster1::> security key-manager onboard disable
```

## Transitioning to onboard key management from external key management

If you want to switch to onboard key management from external key management, you must delete the external key management configuration before you can enable onboard key management.

### Before you begin

- For hardware-based encryption, you must reset the data keys of all FIPS drives or SEDs to the default value.  
[Returning a FIPS drive or SED to unprotected mode](#) on page 58
- You must have deleted all external key manager connections.  
[Deleting an external key manager connection](#) on page 59
- You must be a cluster administrator to perform this task.

### Step

Delete the external key management configuration for a cluster:

```
security key-manager delete-kmip-config
```

For this ONTAP version...	Use this command...
ONTAP 9.6 and later	<code>security key-manager external disable -vserver admin_SVM</code>
ONTAP 9.5 and earlier	<code>security key-manager delete-kmip-config</code>

**Note:** For complete command syntax, see the man pages. The ONTAP 9.6 version of the command requires advanced privilege level.

The following ONTAP 9.6 commands delete the external key management configurations for `cluster1`:

```
cluster1::> set -privilege advanced  
cluster1::> security key-manager external disable
```

## What happens when key management servers are not reachable during the boot process

ONTAP takes certain precautions to avoid undesired behavior in the event that a storage system configured for NSE cannot reach any of the specified key management servers during the boot process.

If the storage system is configured for NSE, the SEDs are rekeyed and locked, and the SEDs are powered on, the storage system must retrieve the required authentication keys from the key management servers to authenticate itself to the SEDs before it can access the data.

The storage system attempts to contact the specified key management servers for up to three hours. If the storage system cannot reach any of them after that time, the boot process stops and the storage system halts.

If the storage system successfully contacts any specified key management server, it then attempts to establish an SSL connection for up to 15 minutes. If the storage system cannot establish an SSL connection with any specified key management server, the boot process stops and the storage system halts.

While the storage system attempts to contact and connect to key management servers, it displays detailed information about the failed contact attempts at the CLI. You can interrupt the contact attempts at any time by pressing Ctrl-C.

As a security measure, SEDs allow only a limited number of unauthorized access attempts, after which they disable access to the existing data. If the storage system cannot contact any specified key management servers to obtain the proper authentication keys, it can only attempt to authenticate with the default key which leads to a failed attempt and a panic. If the storage system is configured to automatically reboot in case of a panic, it enters a boot loop which results in continuous failed authentication attempts on the SEDs.

Halting the storage system in these scenarios is by design to prevent the storage system from entering a boot loop and possible unintended data loss as a result of the SEDs locked permanently due to exceeding the safety limit of a certain number of consecutive failed authentication attempts. The limit and the type of lockout protection depends on the manufacturing specifications and type of SED:

SED type	Number of consecutive failed authentication attempts resulting in lockout	Lockout protection type when safety limit is reached
HDD	1024	Permanent. Data cannot be recovered, even when the proper authentication key becomes available again.
X440_PHM2800MCTO 800GB NSE SSDs with firmware revisions NA00 or NA01	5	Temporary. Lockout is only in effect until disk is power-cycled.
X577_PHM2800MCTO 800GB NSE SSDs with firmware revisions NA00 or NA01	5	Temporary. Lockout is only in effect until disk is power-cycled.
X440_PHM2800MCTO 800GB NSE SSDs with higher firmware revisions	1024	Permanent. Data cannot be recovered, even when the proper authentication key becomes available again.
X577_PHM2800MCTO 800GB NSE SSDs with higher firmware revisions	1024	Permanent. Data cannot be recovered, even when the proper authentication key becomes available again.
All other SSD models	1024	Permanent. Data cannot be recovered, even when the proper authentication key becomes available again.

For all SED types, a successful authentication resets the try count to zero.

If you encounter this scenario where the storage system is halted due to failure to reach any specified key management servers, you must first identify and correct the cause for the communication failure before you attempt to continue booting the storage system.

## Disabling encryption by default with ONTAP 9.7 and later

Starting with ONTAP 9.7, aggregate and volume encryption is enabled by default if you have a volume encryption (VE) licence and use an onboard or external key manager. You can disable encryption by default if required.

### Before you begin

You must be a cluster administrator to perform this task, or an SVM administrator to whom the cluster administrator has delegated authority.

### Step

To disable encryption by default in ONTAP 9.7 or later, run the following command:

```
options -option-name encryption.data_at_rest_encryption.disable_by_default -vserver  
(vservername or * for all) -option-value on
```

For complete command syntax, see the man page for the command.

## Where to find additional information

---

You can learn more about the tasks described in this guide in NetApp's extensive documentation library.

- [\*Disk and aggregate management\*](#)  
Describes how to manage physical storage in NetApp systems, including disks, aggregates, and RAID groups.
- [\*Logical storage management\*](#)  
Describes how to manage logical storage in NetApp systems, including FlexVol volumes, FlexClone volumes, FlexCache volumes, files, and LUNs.
- [\*FlexGroup volumes management\*](#)  
Describes how to manage FlexGroup volumes.
- [\*Archive and compliance using SnapLock technology\*](#)  
Describes how to manage SnapLock volumes.
- [\*ONTAP 9 commands\*](#)  
Describes encryption commands in reference format.
- [\*NetApp Documentation: OnCommand Workflow Automation \(current releases\)\*](#)  
Describes how to use the OnCommand Workflow Automation scripting tool to perform encryption-related tasks.



## **Copyright, trademark, and machine translation**

---

### **Copyright**

Copyright © 2021 NetApp, Inc. All rights reserved. Printed in the U.S.

No part of this document covered by copyright may be reproduced in any form or by any means—graphic, electronic, or mechanical, including photocopying, recording, taping, or storage in an electronic retrieval system—without prior written permission of the copyright owner.

Software derived from copyrighted NetApp material is subject to the following license and disclaimer:

THIS SOFTWARE IS PROVIDED BY NETAPP "AS IS" AND WITHOUT ANY EXPRESS OR IMPLIED WARRANTIES, INCLUDING, BUT NOT LIMITED TO, THE IMPLIED WARRANTIES OF MERCHANTABILITY AND FITNESS FOR A PARTICULAR PURPOSE, WHICH ARE HEREBY DISCLAIMED. IN NO EVENT SHALL NETAPP BE LIABLE FOR ANY DIRECT, INDIRECT, INCIDENTAL, SPECIAL, EXEMPLARY, OR CONSEQUENTIAL DAMAGES (INCLUDING, BUT NOT LIMITED TO, PROCUREMENT OF SUBSTITUTE GOODS OR SERVICES; LOSS OF USE, DATA, OR PROFITS; OR BUSINESS INTERRUPTION) HOWEVER CAUSED AND ON ANY THEORY OF LIABILITY, WHETHER IN CONTRACT, STRICT LIABILITY, OR TORT (INCLUDING NEGLIGENCE OR OTHERWISE) ARISING IN ANY WAY OUT OF THE USE OF THIS SOFTWARE, EVEN IF ADVISED OF THE POSSIBILITY OF SUCH DAMAGE.

NetApp reserves the right to change any products described herein at any time, and without notice. NetApp assumes no responsibility or liability arising from the use of products described herein, except as expressly agreed to in writing by NetApp. The use or purchase of this product does not convey a license under any patent rights, trademark rights, or any other intellectual property rights of NetApp.

The product described in this manual may be protected by one or more U.S. patents, foreign patents, or pending applications.

Data contained herein pertains to a commercial item (as defined in FAR 2.101) and is proprietary to NetApp, Inc. The U.S. Government has a non-exclusive, non-transferrable, non-sublicensable, worldwide, limited irrevocable license to use the Data only in connection with and in support of the U.S. Government contract under which the Data was delivered. Except as provided herein, the Data may not be used, disclosed, reproduced, modified, performed, or displayed without the prior written approval of NetApp, Inc. United States Government license rights for the Department of Defense are limited to those rights identified in DFARS clause 252.227-7015(b).

### **Trademark**

NETAPP, the NETAPP logo, and the marks listed on the NetApp Trademarks page are trademarks of NetApp, Inc. Other company and product names may be trademarks of their respective owners.

<https://www.netapp.com/company/legal/trademarks/>

### **Machine translation**

See important information about localized content at netapp.com.

<https://www.netapp.com/company/legal/machine-translation/>