

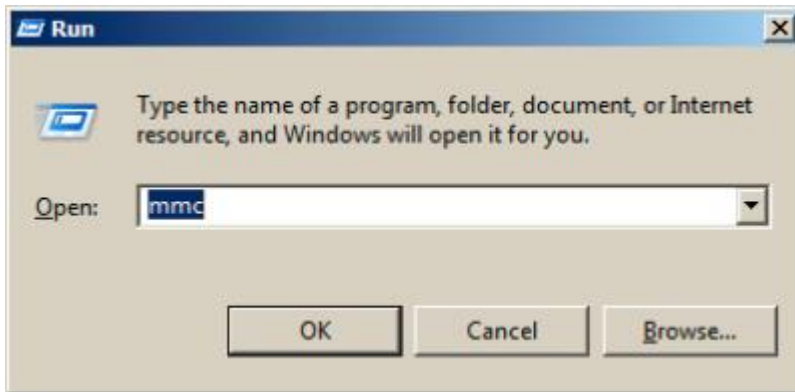
## Importing certificates to the TOE

The following instructions will guide you on how to import Intermediate & Root Certificates through MMC (Windows Microsoft Management Console).

### Import Intermediate Certificate using MMC

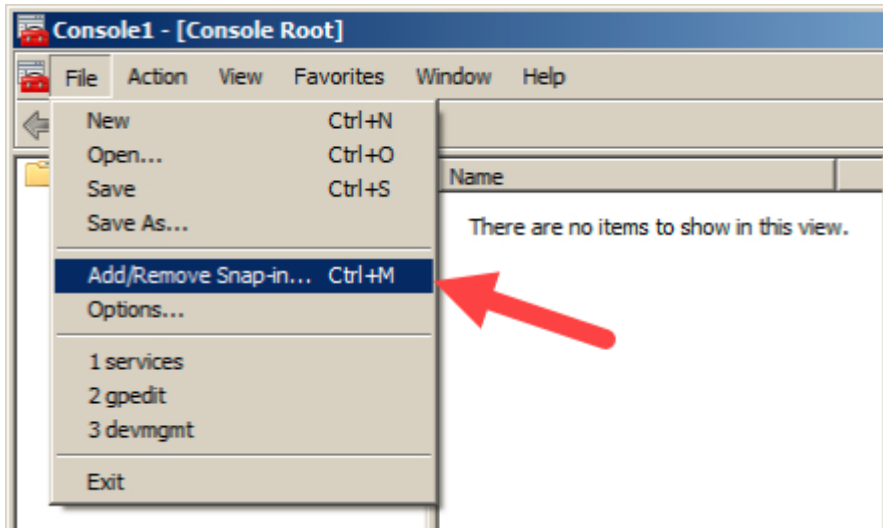
#### 1. Open MMC

To open MMC (Microsoft Management Console), go to Run (Win+R), type **mmc** & click **OK**



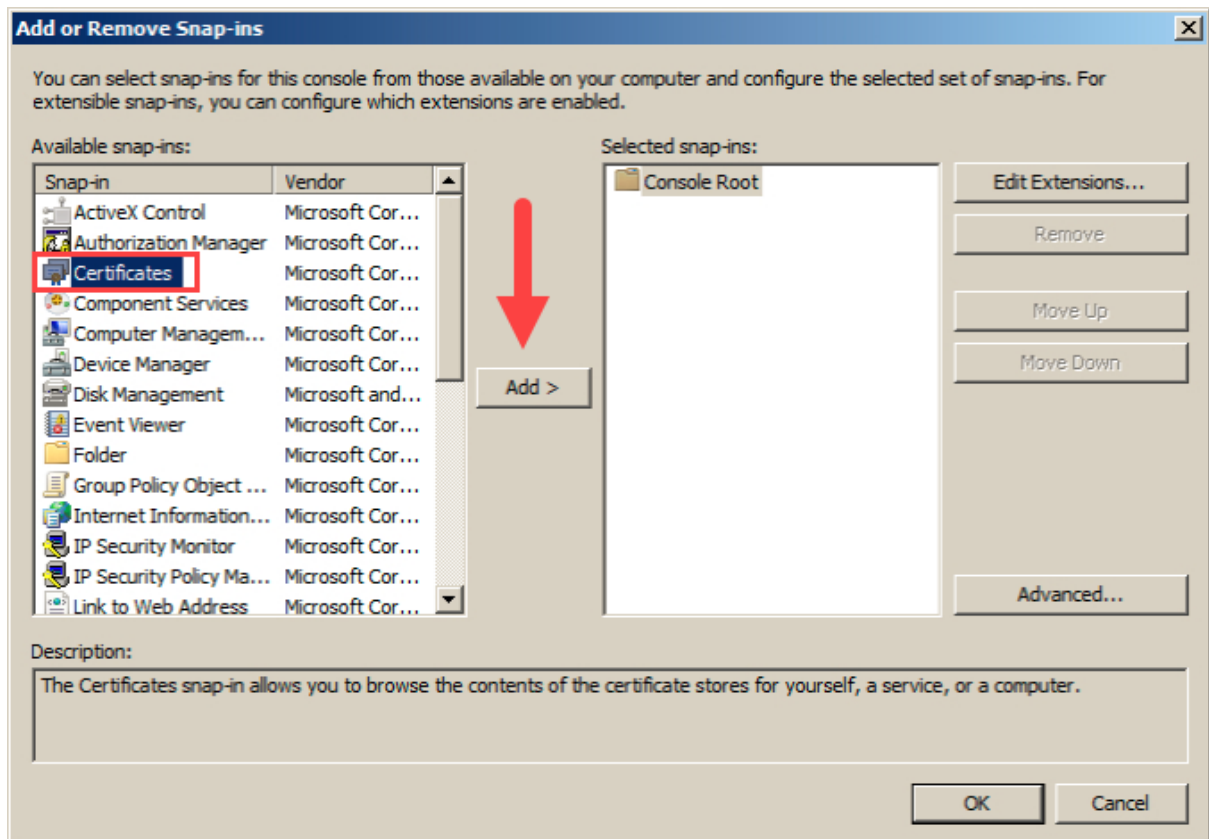
#### 2. Access Add or Remove Snap-Ins

In MMC, click on File & select the option 'Add/Remove Snap-in'

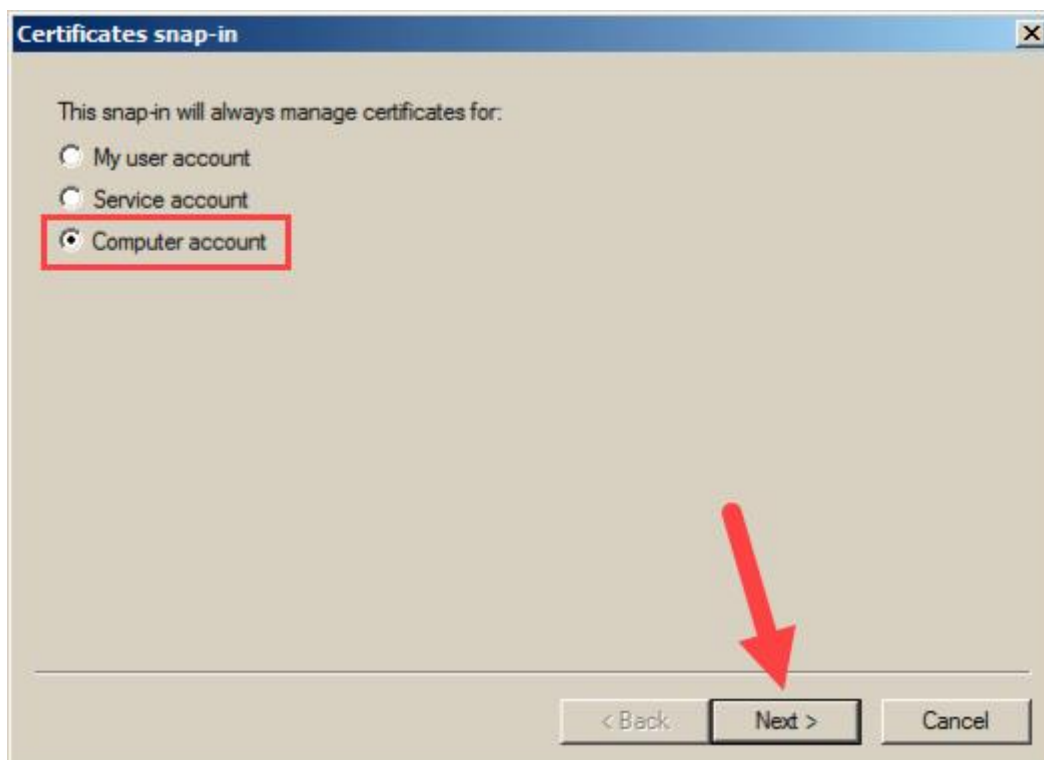


#### 3. Select Add

In the window 'Add/Remove Snap-ins,' select the 'Certificates' option and click on the 'Add' button

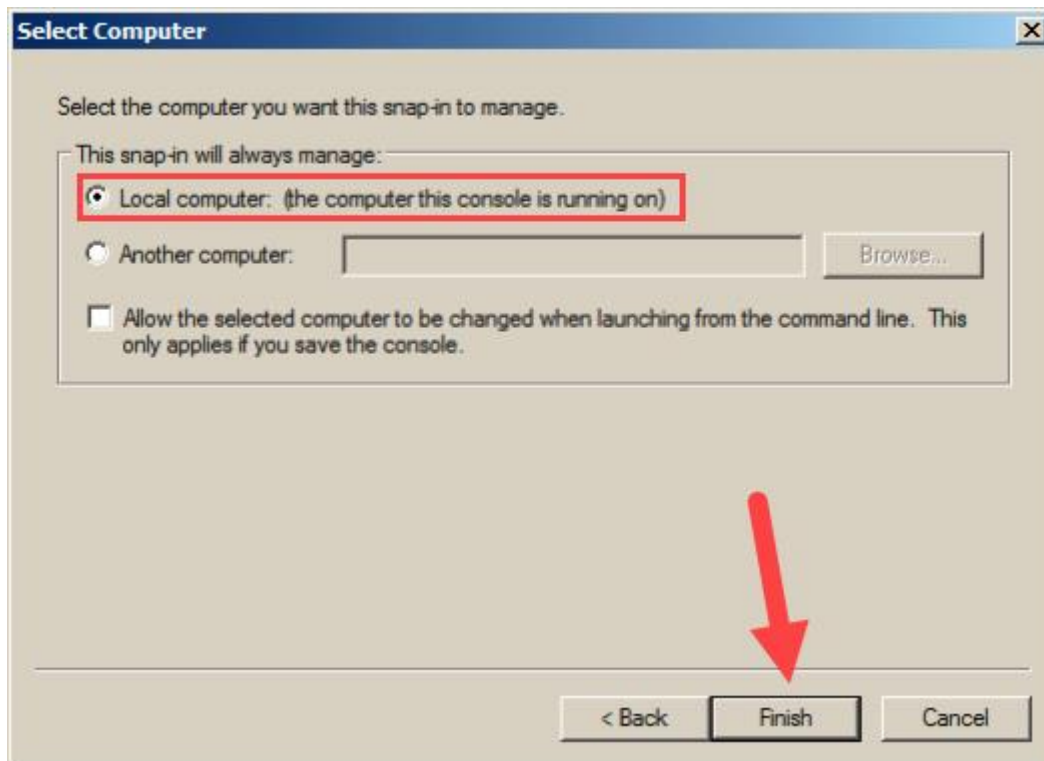


#### 4. Select 'Computer Account'



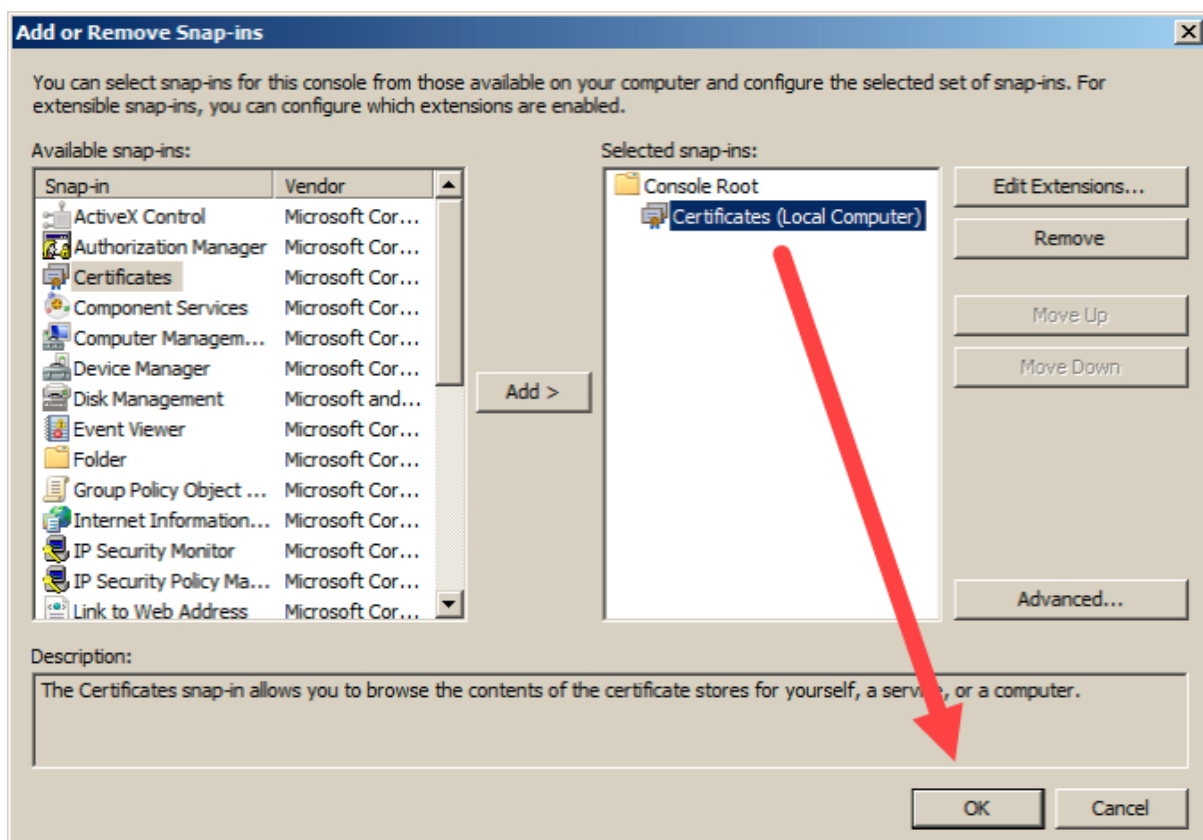
#### 5. Select 'Local Computer'

This will indicate what the snap-in will manage



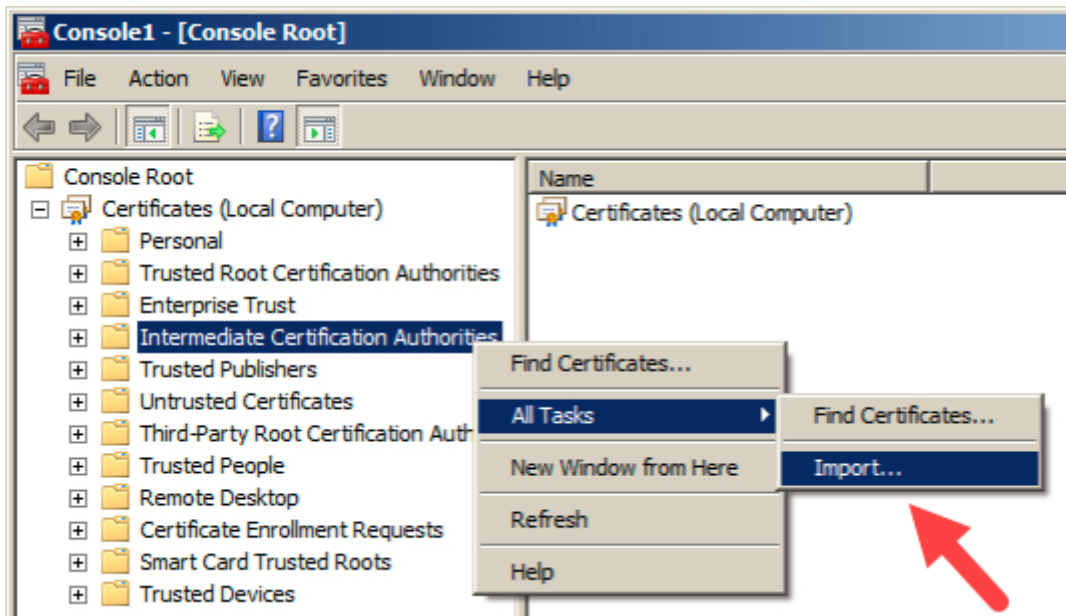
## 6. 'Certificates (Local Computer)'

This will have been selected automatically. Click 'OK' to add in console



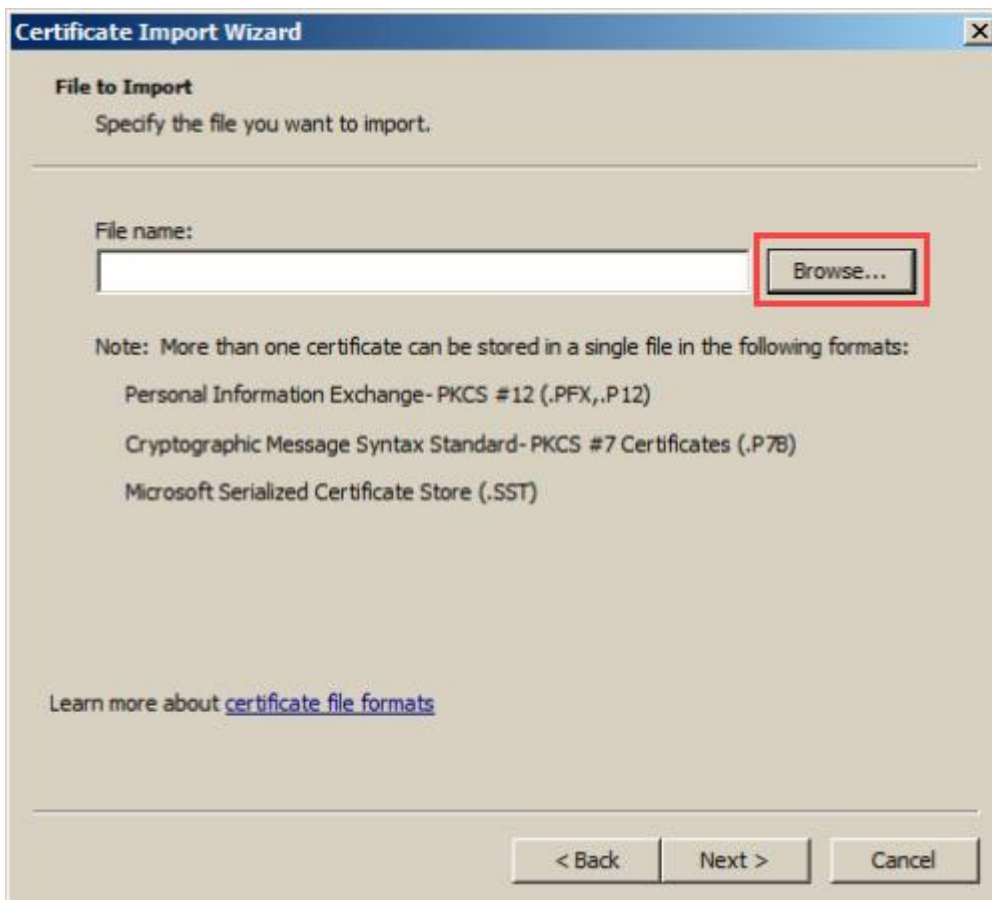
## 7. Import Intermediate

For importing the Intermediate Certificate, right click on the 'Intermediate Certification Authorities' and then go to **All Tasks > Import**



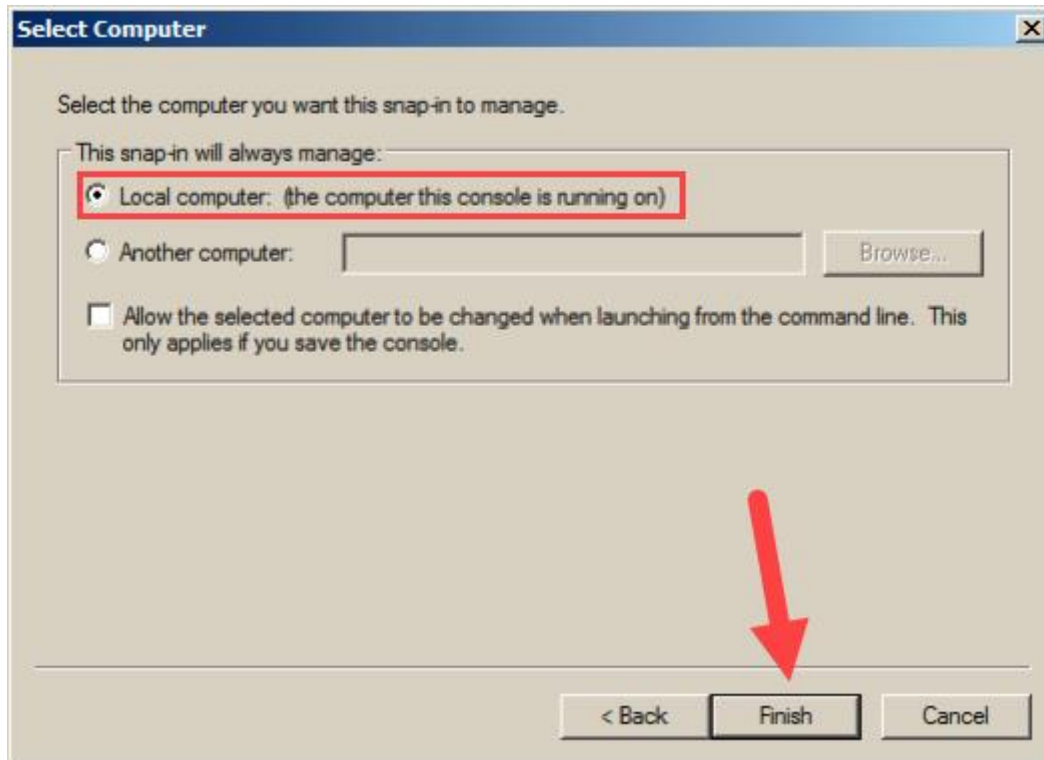
## 8. Locate your Intermediate in the Certificate Import Wizard

Browse for your Intermediate Certificate on your Machine. Click on **Next**



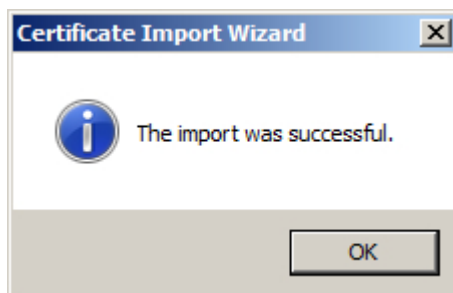
## 10. Automatically select the certificate store based on the type of certificate.

You will be prompted to the window where you can place the certificate in Certificate Store. Leave without making any changes. If you have PKCS7 file with several certificates in it, you can go with 'Automatically select the certificate store based on the type of certificate.' Lastly, click on **Next**.



## 11. Finish

Click Finish, as certificate has been imported



## Import Root Certificate using MMC

To import **Root Certificates** through MMC (Windows Microsoft Management Console), you must go through same process. Instead of right-clicking on 'Intermediate Certification Authorities,' right-click on the '**Trusted Root Certification Authorities**' and go to All Tasks > Import. The rest of the steps (steps 8 – 11) are the same for Root certificate.



*Note: MMC is needed only when the trusted root certificates were not included in console or else was deleted with an intention. COMODO root certificates are already there in the trusted stores of Windows Servers.*